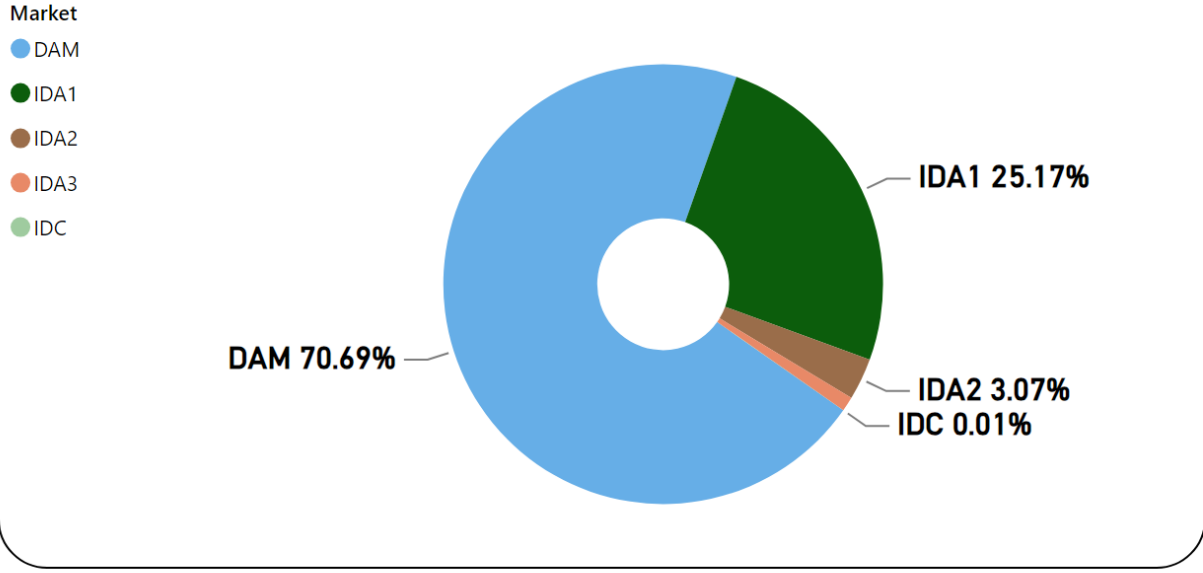


MMU Weekly Market Summary Report

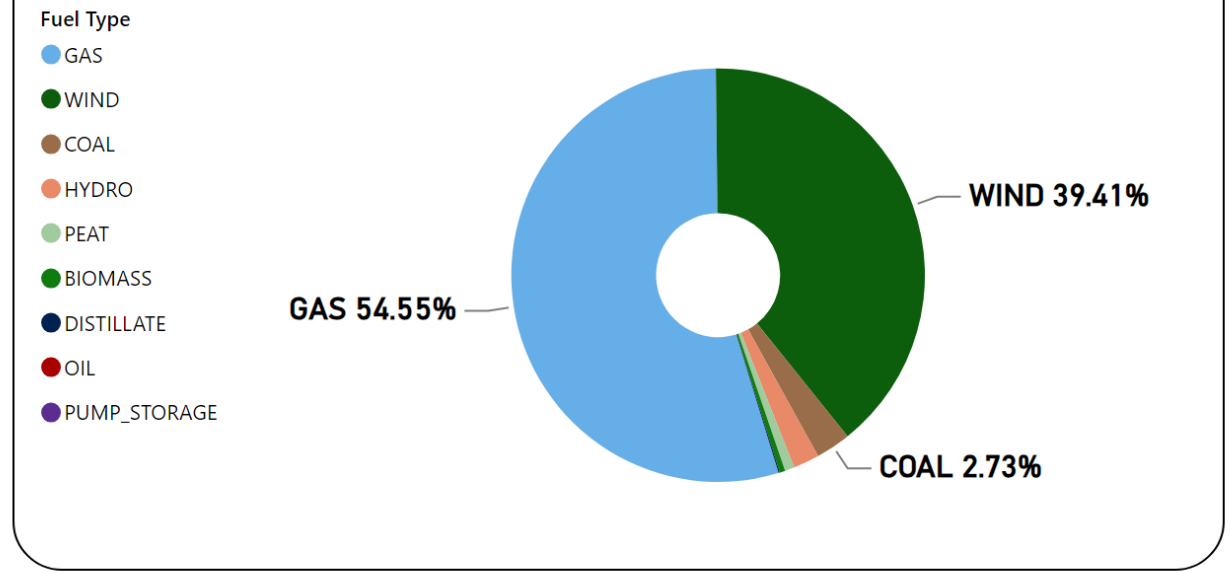
- Week Commencing 01 April 2024

Weekly Volume by Market



Source: SEMO PX

Weekly Fuel Mix



Source: SEMO PX

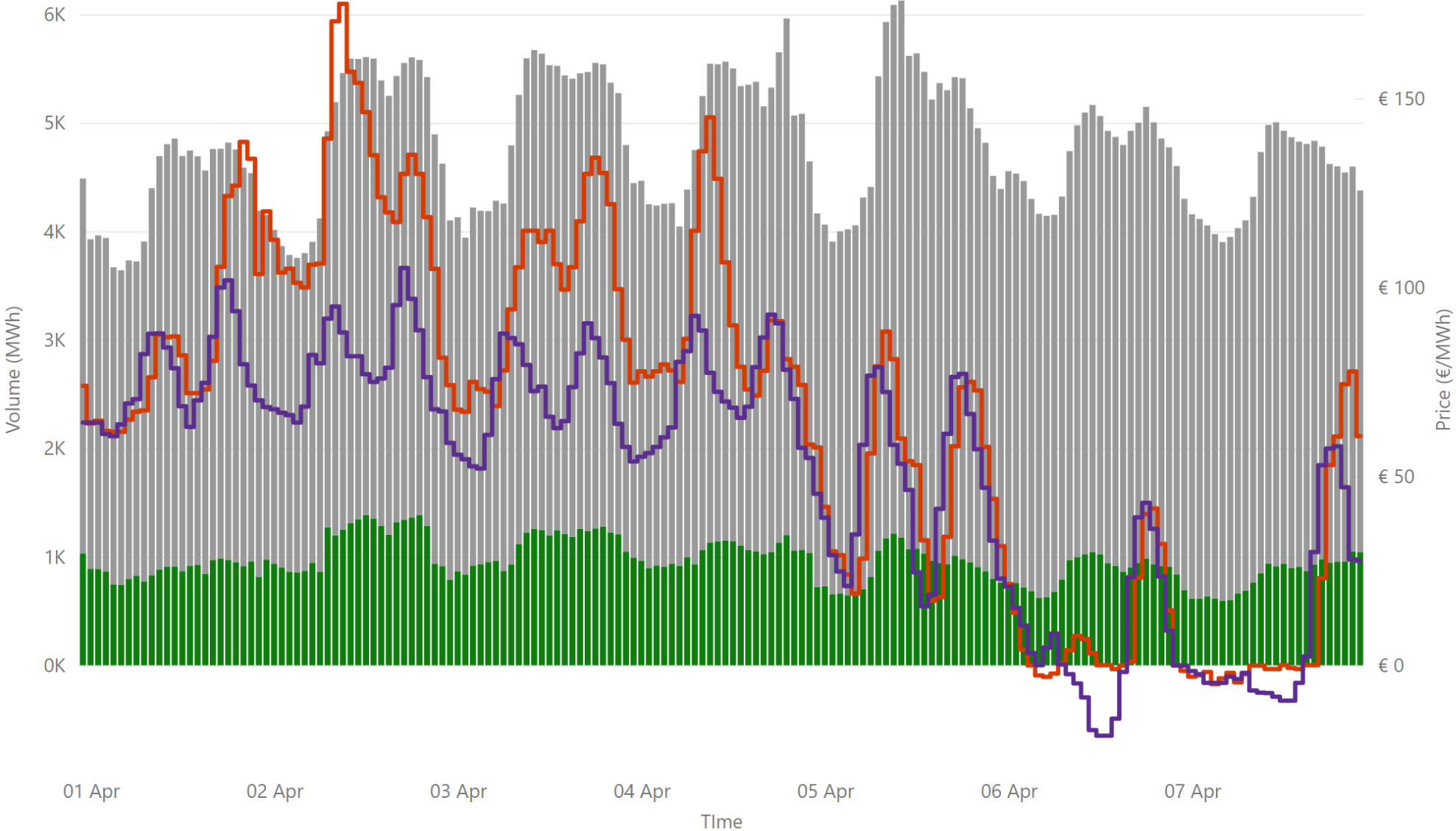
Summary Table

| Date | Daily System Demand (MWh)* | Daily DAM Price (€/MWh)** | Daily Actual Wind (MWh)* | Daily Average Gas Price (p/th)*** | Daily Average Coal Price (€/t)*** | Daily Average Carbon Price (€/t)*** |
|---------------|----------------------------|---------------------------|--------------------------|-----------------------------------|-----------------------------------|-------------------------------------|
| 01 April 2024 | 101,861.75 | 86.21 | 26,405.25 | 67.05 | 119.55 | 60.09 |
| 02 April 2024 | 113,030.75 | 127.02 | 7,481.00 | 64.05 | 122.15 | 57.37 |
| 03 April 2024 | 116,335.00 | 100.96 | 13,106.00 | 62.15 | 117.80 | 56.01 |
| 04 April 2024 | 116,692.50 | 89.44 | 25,924.25 | 61.85 | 116.50 | 56.87 |
| 05 April 2024 | 113,089.25 | 50.98 | 79,562.00 | 63.65 | 117.90 | 59.25 |
| 06 April 2024 | 103,390.50 | 10.20 | 65,939.25 | 63.65 | 117.90 | 59.25 |
| 07 April 2024 | 99,042.00 | 13.68 | 64,596.50 | 63.65 | 117.90 | 59.25 |

Sources: * EirGrid ** SEMO PX *** Oil Market Journal

Weekly Day Ahead Market Summary - Week Commencing

01 April 2024



€ 67.01
Weekly Average SEM DAM Price*

51.81
Weekly Average GB EPEX PRICE*

€ 55,360,859.97
Weekly SEM DAM Market Value*

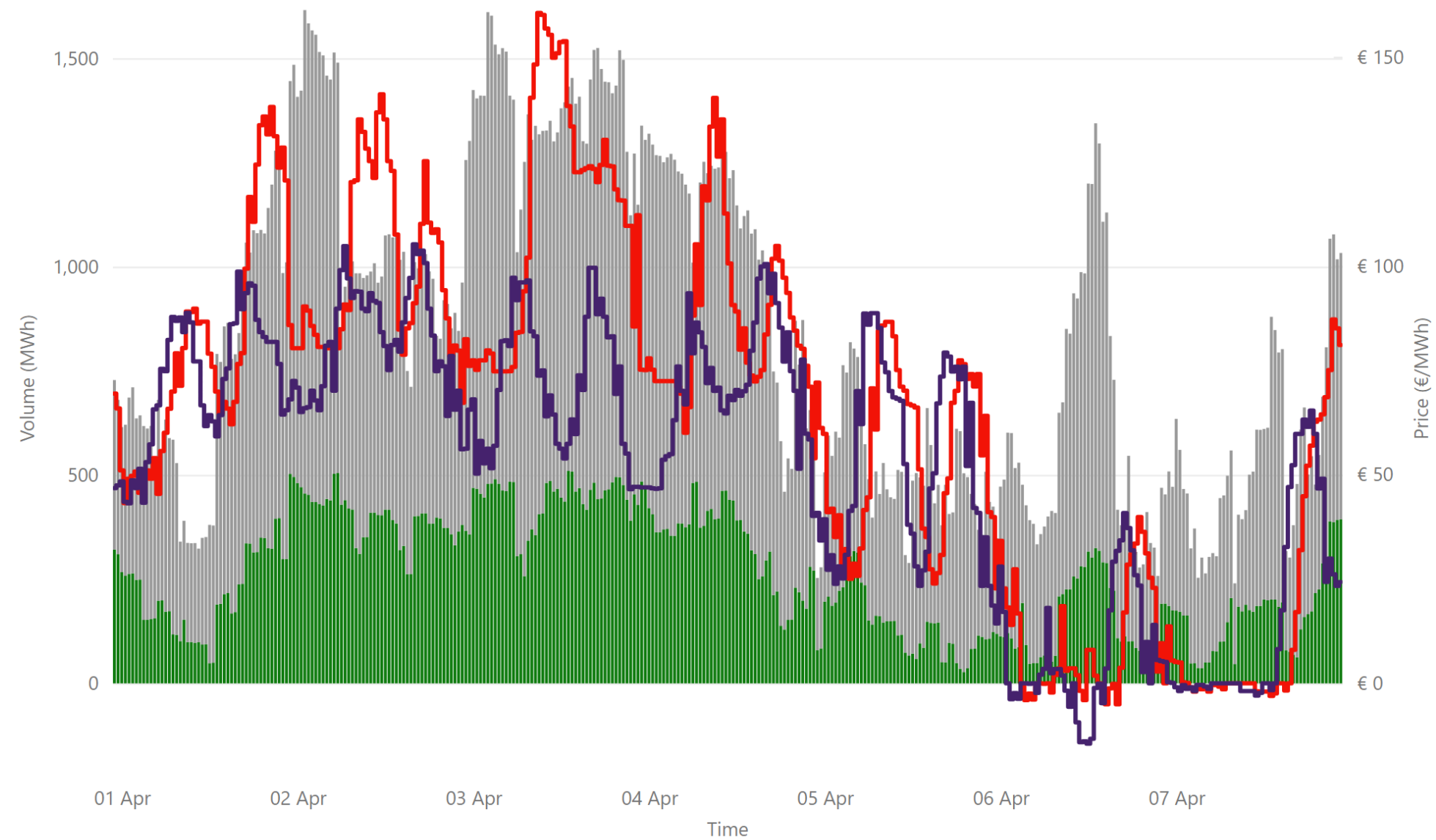
800,481.70
Weekly SEM DAM Volume MWh*

Sources:
* SEMO PX
** EPEX
*** Nordpool

Legend ● NI Volume* ● ROI Volume* ● SEM DAM Price* ● GB EPEX Price*

Weekly Intraday Auction 1 Summary - Week Commencing

01 April 2024



€ 65.86
Weekly Average SEM IDA1 Price*

€ 53.16
Weekly Average GB IDA1 Price**

€ 22,218,931.74
Weekly SEM IDA1 Market Value*

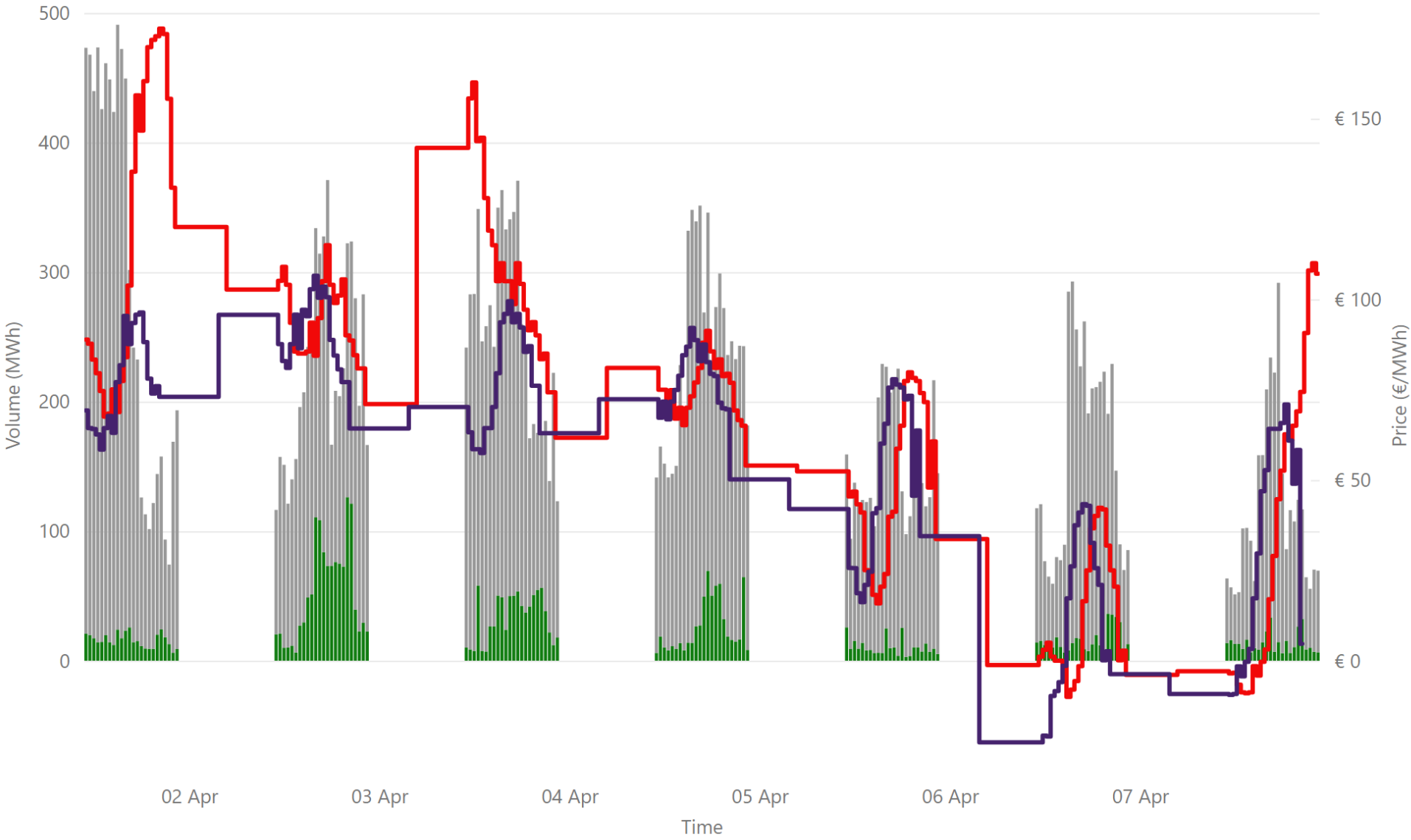
285,008.80
Weekly SEM DAM Volume MWh*

Sources:
* SEMO PX
** EPEX

Legend ● NI Volume* ● ROI Volume* ● SEM IDA1 Price* ● GB IDA1 Price**

Weekly Intraday Auction 2 Summary - Week Commencing

01 April 2024



€ 69.92
Weekly Average SEM IDA2 Price*

€ 58.34
Weekly Average GB IDA2 Price**

€ 2,643,429.73
Weekly SEM IDA2 Market Value*

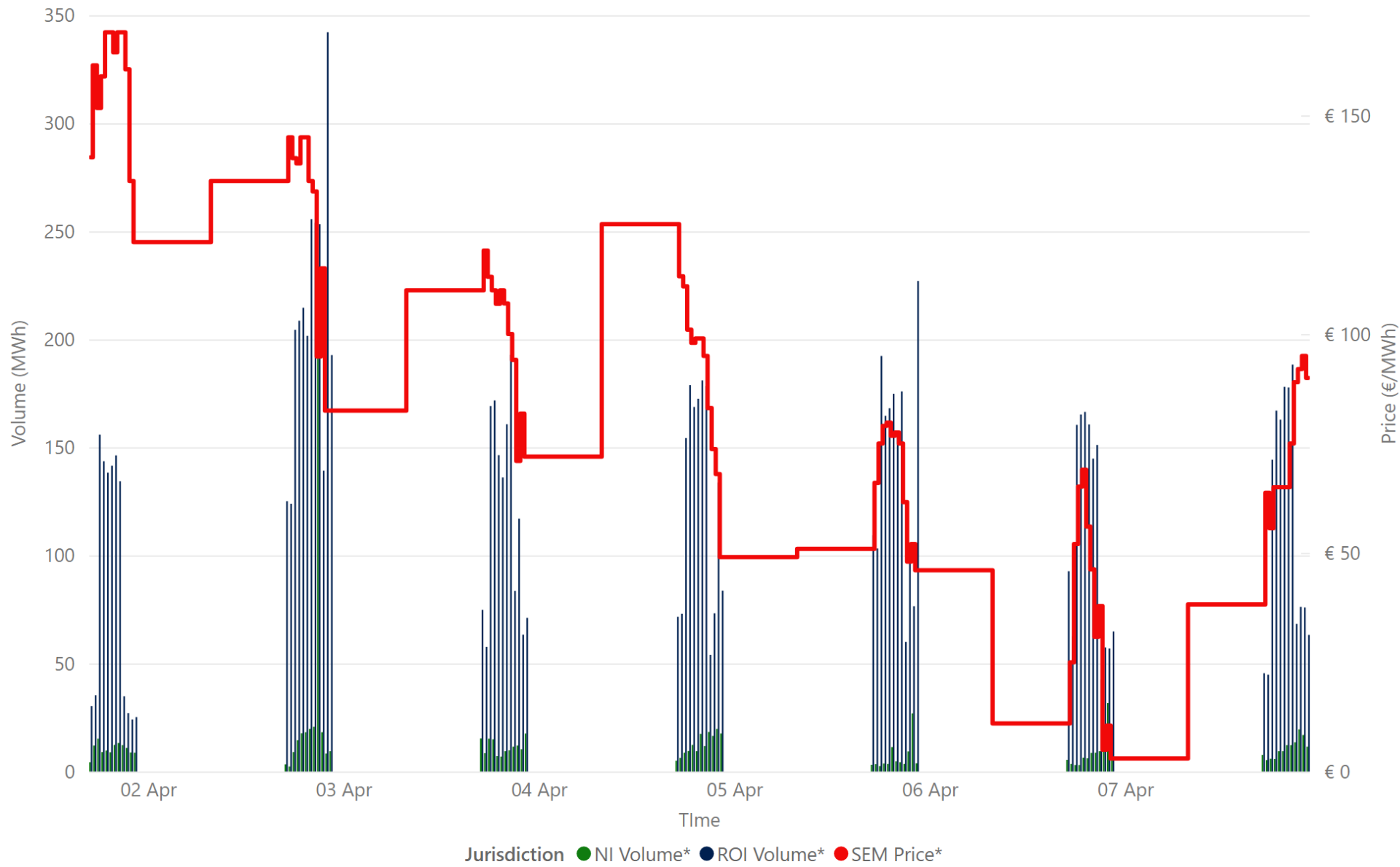
34,818.60
Weekly SEM IDA2 Volume MWh*

Sources:
* SEMO PX
** EPEX

Jurisdiction Volume ● NI Volume* ● ROI Volume* ● SEM IDA2 Price* ● GB Price**

Weekly Intraday Auction 3 Summary - Week Commencing

01 April 2024



€ 92.00
Weekly Average SEM IDA3 Price*

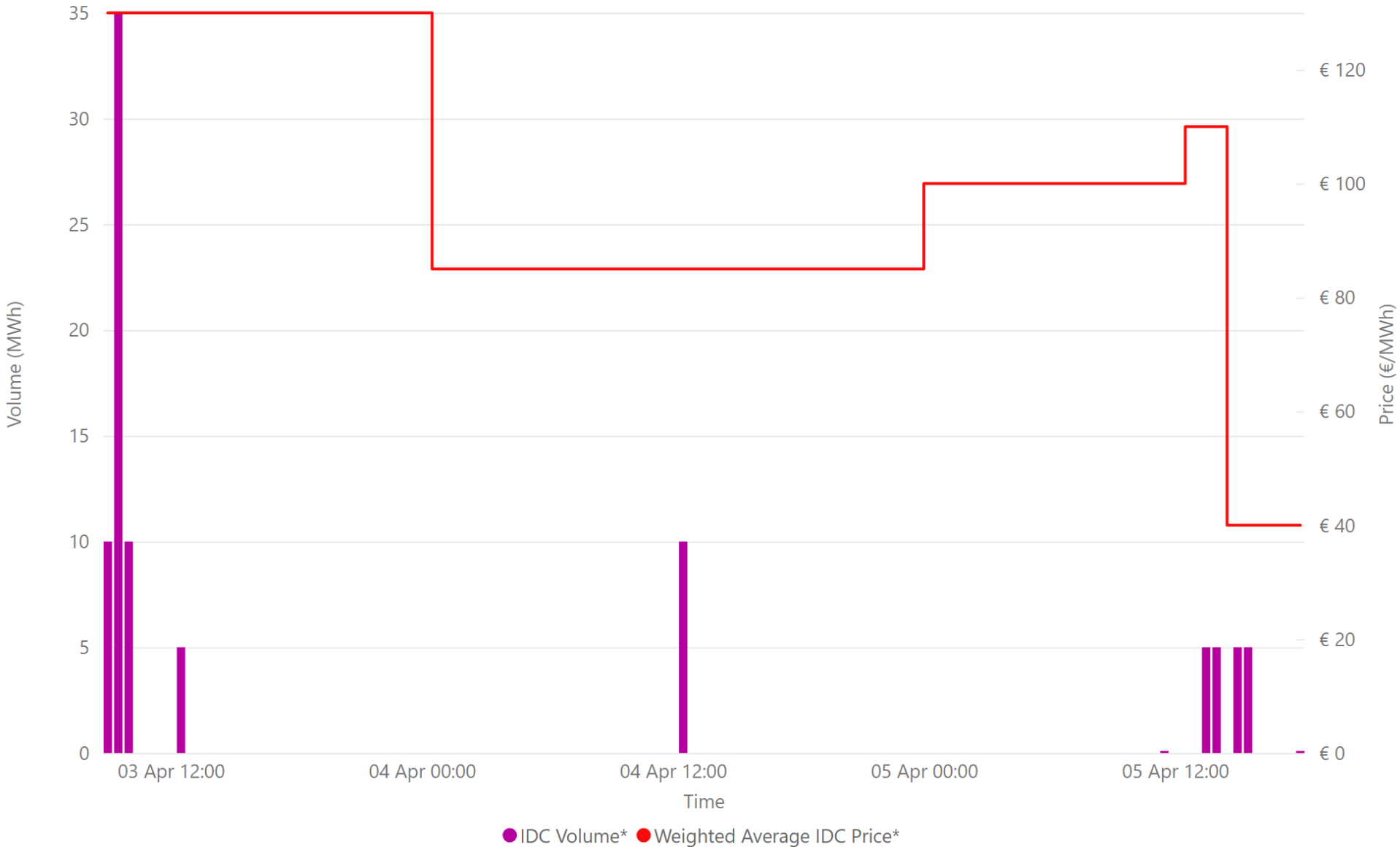
€ 1,135,502.76
Weekly SEM IDA3 Market Value*

12,049.60
Weekly SEM IDA3 Volume MWh*

Source: * SEMO PX

Weekly Intraday Continuous Summary - Week Commencing

03 April 2024



- € 95.00 Weekly SEM IDC Average Price*
- € 130.00 Weekly SEM IDC Max Price*
- € 40.00 Weekly SEM IDC Min Price*
- 90.20 Weekly SEM IDC Volume MWh*

Source: * SEMO PX

Weekly Balancing Market 5 Minute Summary - Week Commencing

01 April 2024

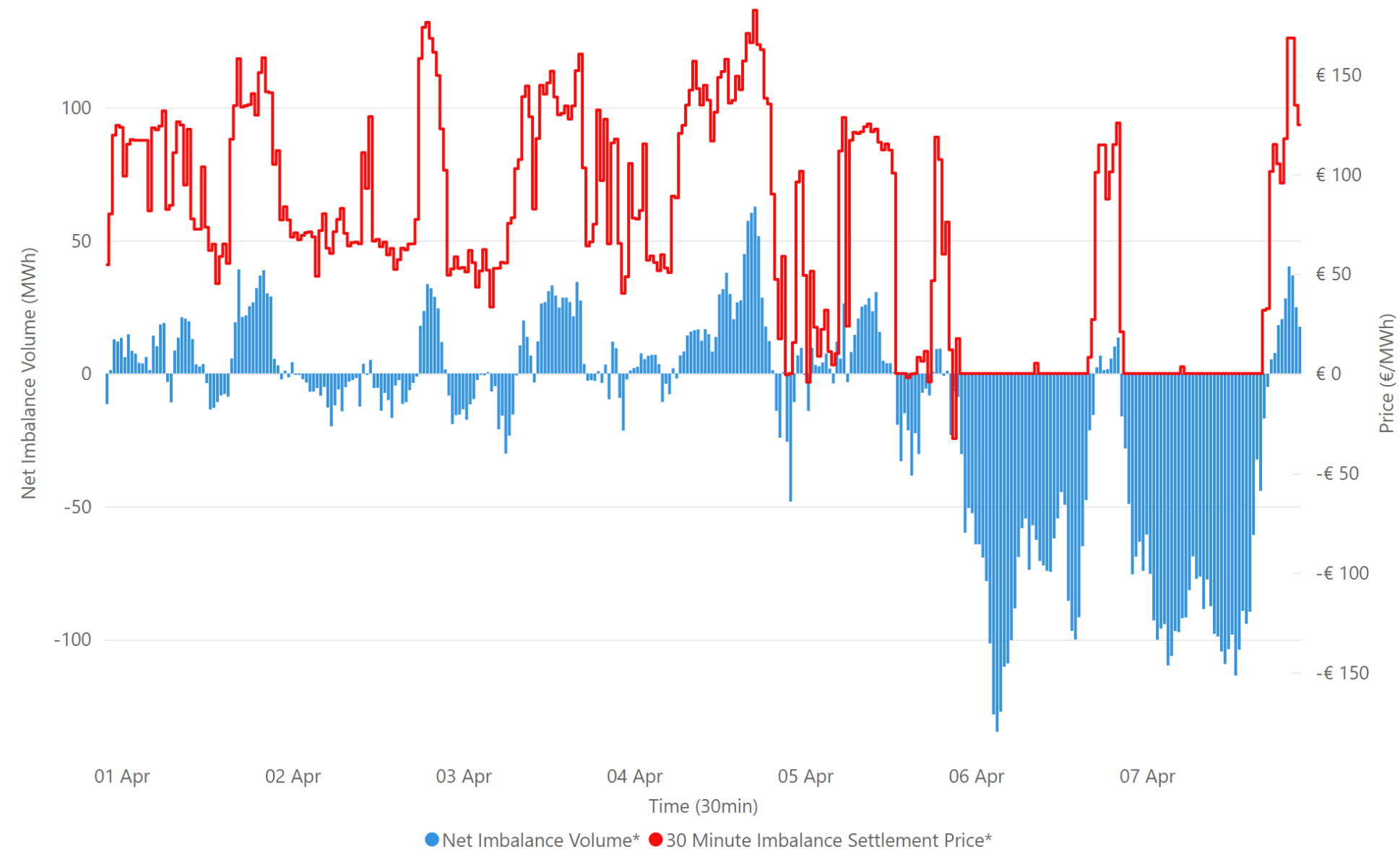


€ 70.25
Ave 5min Imbalance Price*
-€ 169.25
Min 5min Imbalance Price*
€ 199.91
Max 5min Imbalance Price*

Source: * SEMO

Weekly Balancing Market 30 Minute Summary - Week Commencing

01 April 2024



€ 70.25
Ave 30min Imbalance Price*

€ 182.28
Max 30min Imbalance Price*

-€ 32.69
Min 30min Imbalance Price*

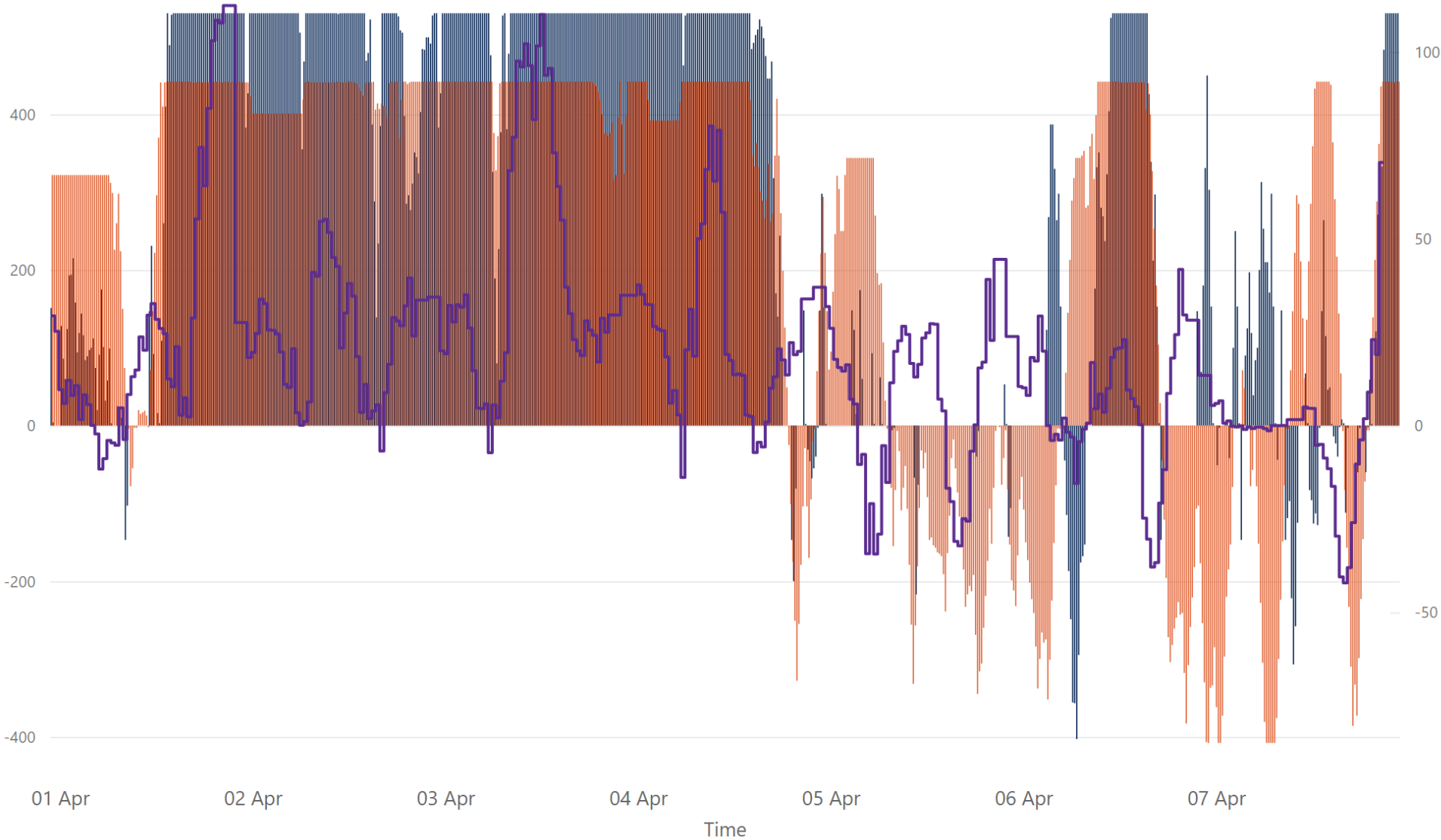
62.74
Max Net Imbalance Volume*

-134.71
Min Net Imbalance Volume*

Source: * SEMO

Weekly Interconnection Summary - Week Commencing

01 April 2024



183,894.00
Weekly MOYLE (MW) Import*

-31,724.00
Weekly MOYLE (MW) Export*

152,170.00
Weekly MOYLE (MW) NET*

187,453.00
Weekly EWIC (MW) Import*

-6,735.00
Weekly EWIC (MW) Export*

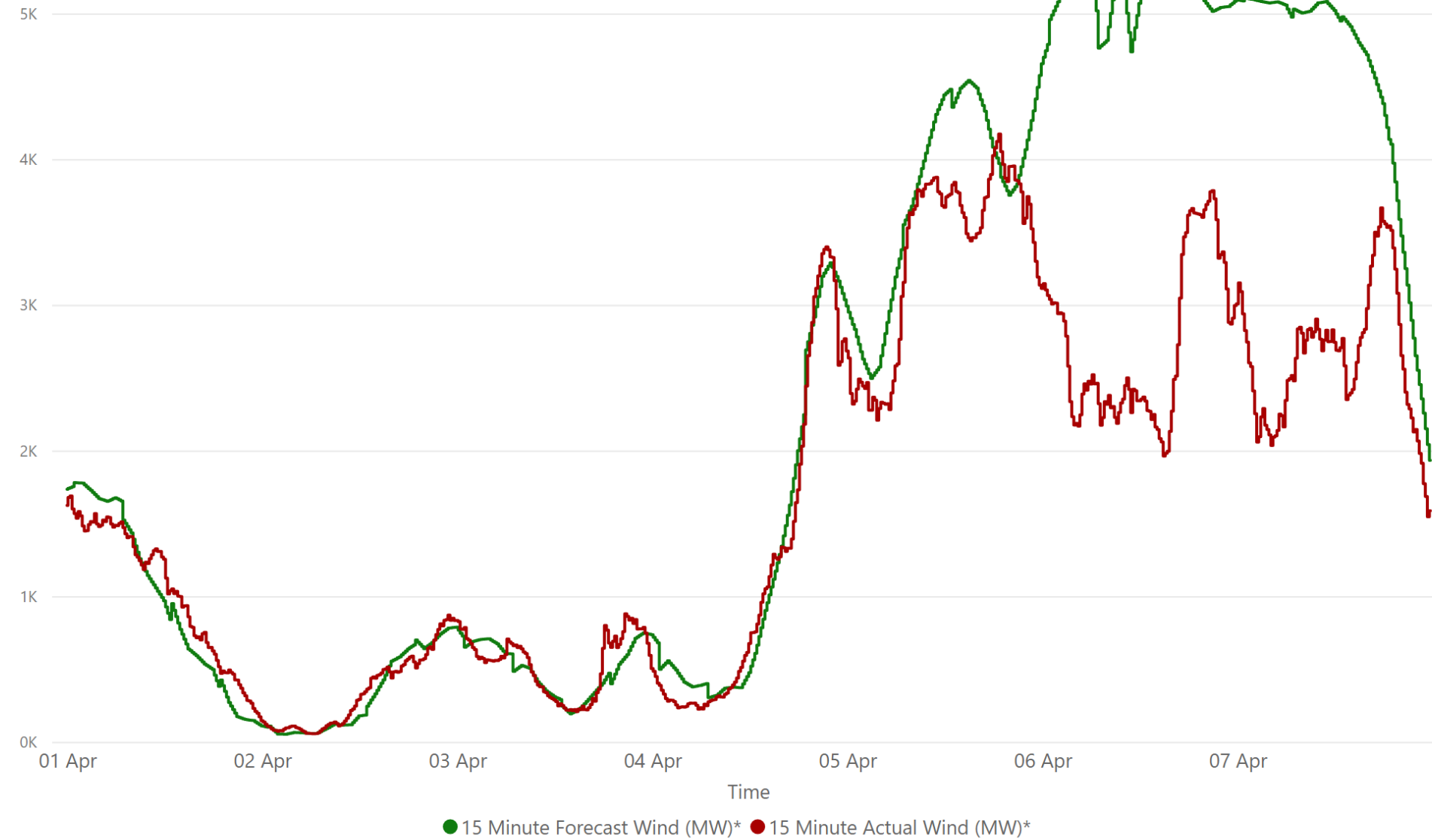
180,718.00
Weekly EWIC (MW) NET*

Sources:
* EirGrid
** SEMO, EPEX & Nordpool

● EWIC Volume (MW)* ● MOYLE Volume (MW)* ● SEM-GB Spread**

Weekly Wind Capacity Summary - Week Commencing

01 April 2024



4172
Max Actual Wind (MW)*

56
Min Actual Wind (MW)*

5364
Max Forecast Wind (MW)*

53
Min Forecast Wind (MW)*

Sources:
* EirGrid