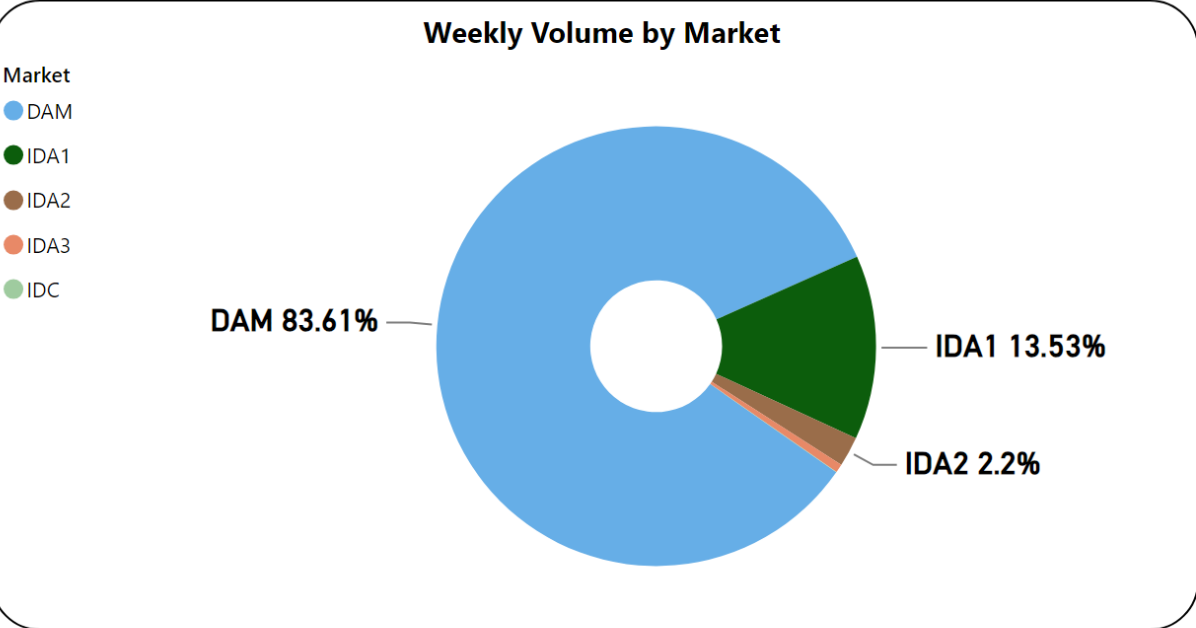
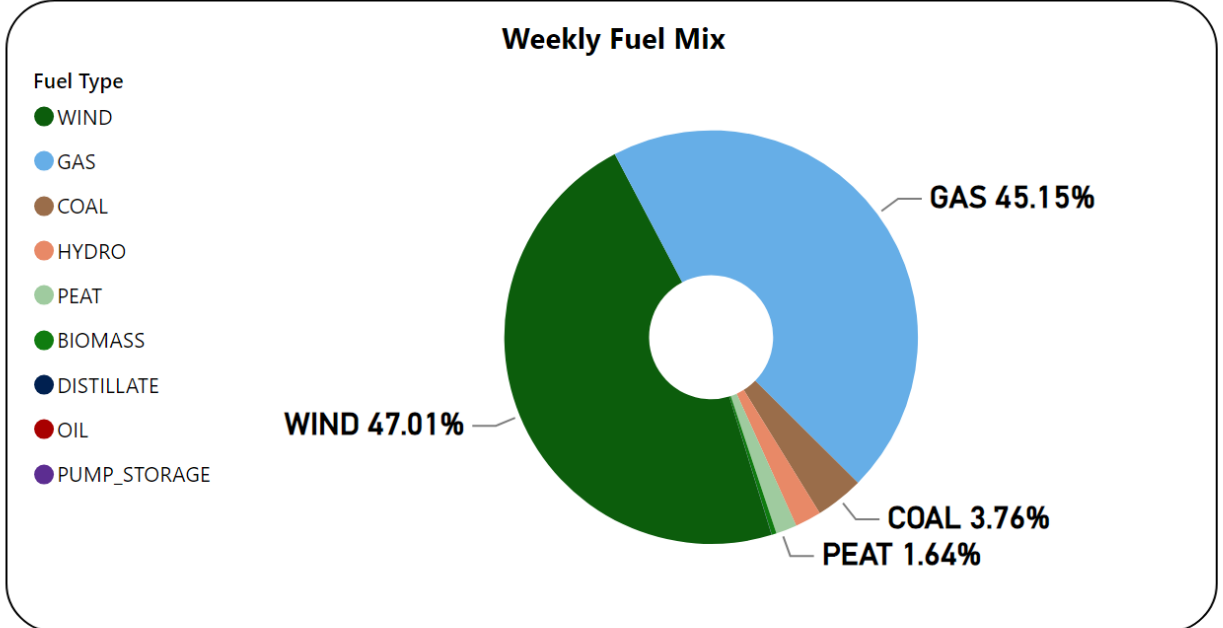


# MMU Weekly Market Summary Report

## - Week Commencing 26 February 2024



Source: SEMO PX



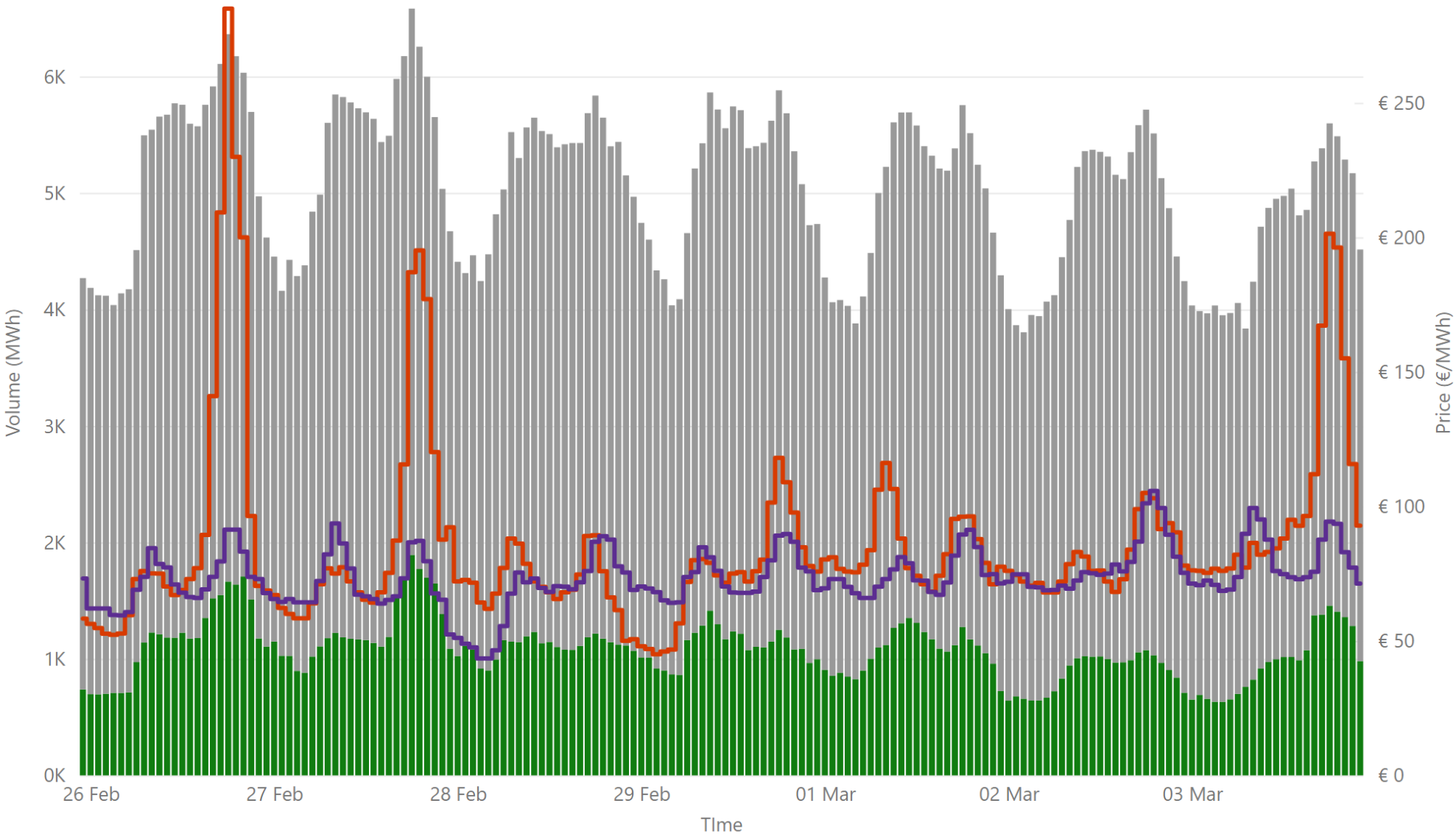
Source: SEMO PX

Summary Table

Date	Daily System Demand (MWh)*	Daily DAM Price (€/MWh)**	Daily Actual Wind (MWh)*	Daily Average Gas Price (p/th)***	Daily Average Coal Price (€/t)***	Daily Average Carbon Price (€/t)***
26 February 2024	121,263.75	104.87	38,587.50	60.60	98.85	52.37
27 February 2024	122,042.75	91.74	51,283.50	61.25	100.10	54.31
28 February 2024	123,725.50	73.20	70,121.75	63.05	104.50	55.83
29 February 2024	122,680.75	75.16	62,159.25	63.30	104.40	54.58
01 March 2024	127,024.50	84.54	68,472.00	67.00	106.95	54.59
02 March 2024	115,920.75	81.04	66,787.00	67.00	106.95	54.59
03 March 2024	111,449.75	105.36	19,744.00	67.00	106.95	54.59

Sources: \* EirGrid \*\* SEMO PX \*\*\* Oil Market Journal

# Weekly Day Ahead Market Summary - Week Commencing 26 February 2024



€ 85.62  
Weekly Average SEM DAM Price\*

73.65  
Weekly Average GB EPEX PRICE\*

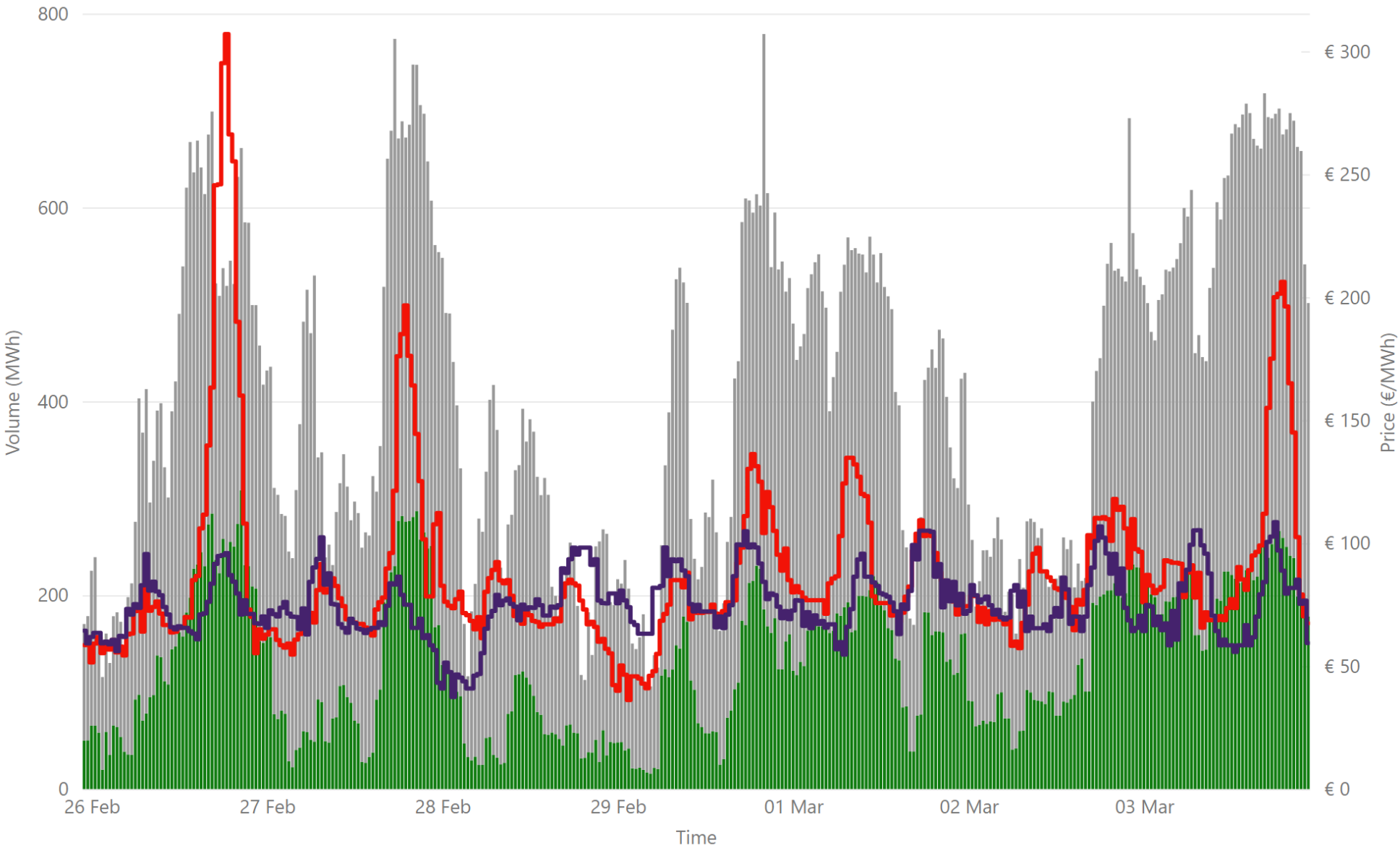
€ 74,462,214.50  
Weekly SEM DAM Market Value\*

847,335.40  
Weekly SEM DAM Volume MWh\*

Sources:  
\* SEMO PX  
\*\* EPEX  
\*\*\* Nordpool

Legend ● NI Volume\* ● ROI Volume\* ● SEM DAM Price\* ● GB EPEX Price\*

# Weekly Intraday Auction 1 Summary - Week Commencing 26 February 2024



€ 87.78  
Weekly Average SEM IDA1 Price\*

€ 75.13  
Weekly Average GB IDA1 Price\*\*

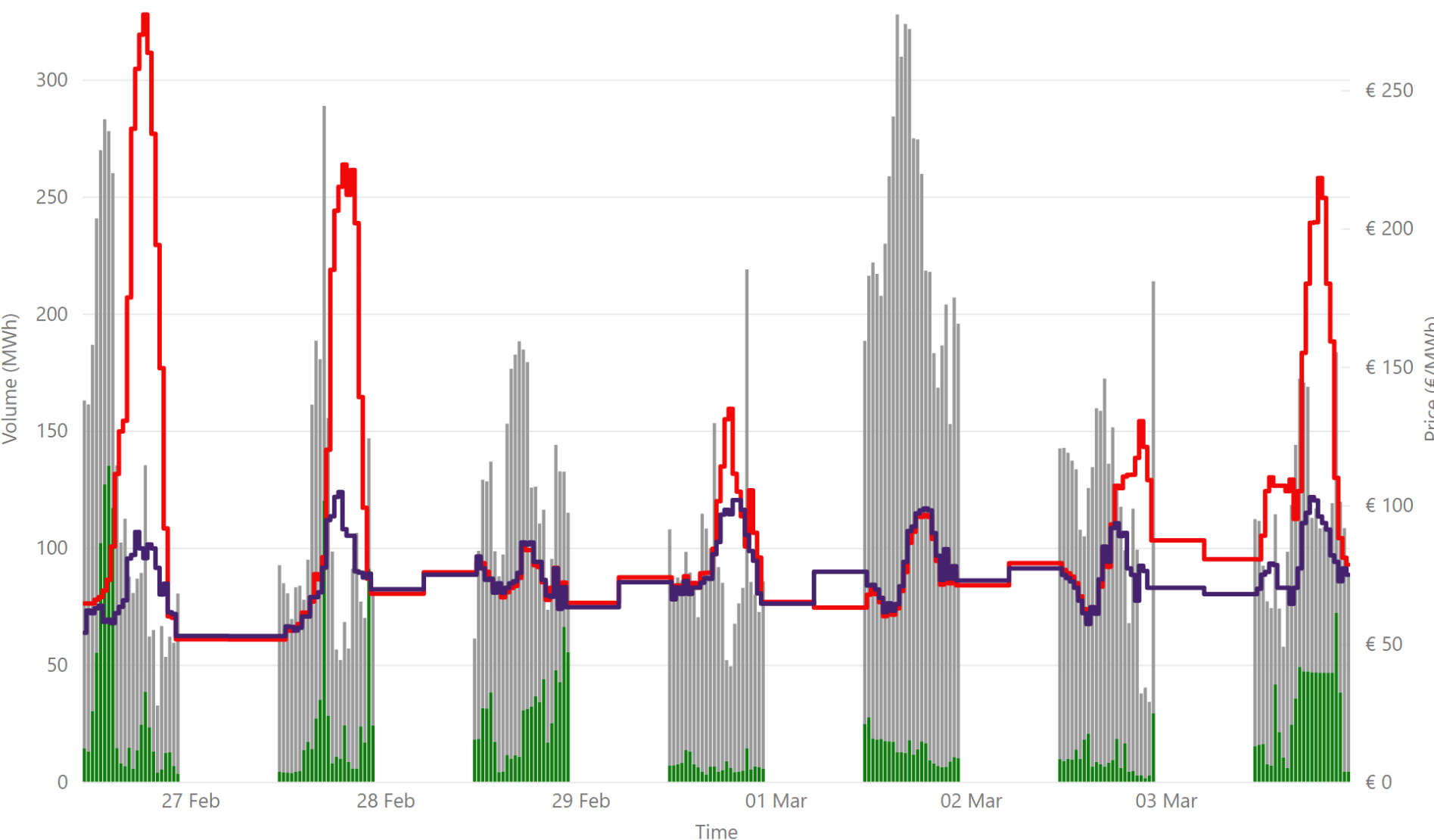
€ 13,207,981.29  
Weekly SEM IDA1 Market Value\*

137,164.15  
Weekly SEM DAM Volume MWh\*

Sources:  
\* SEMO PX  
\*\* EPEX

Legend ● NI Volume\* ● ROI Volume\* ● SEM IDA1 Price\* ● GB IDA1 Price\*\*

# Weekly Intraday Auction 2 Summary - Week Commencing 26 February 2024



€ 100.14  
 Weekly Average SEM IDA2 Price\*

€ 75.64  
 Weekly Average GB IDA2 Price\*\*

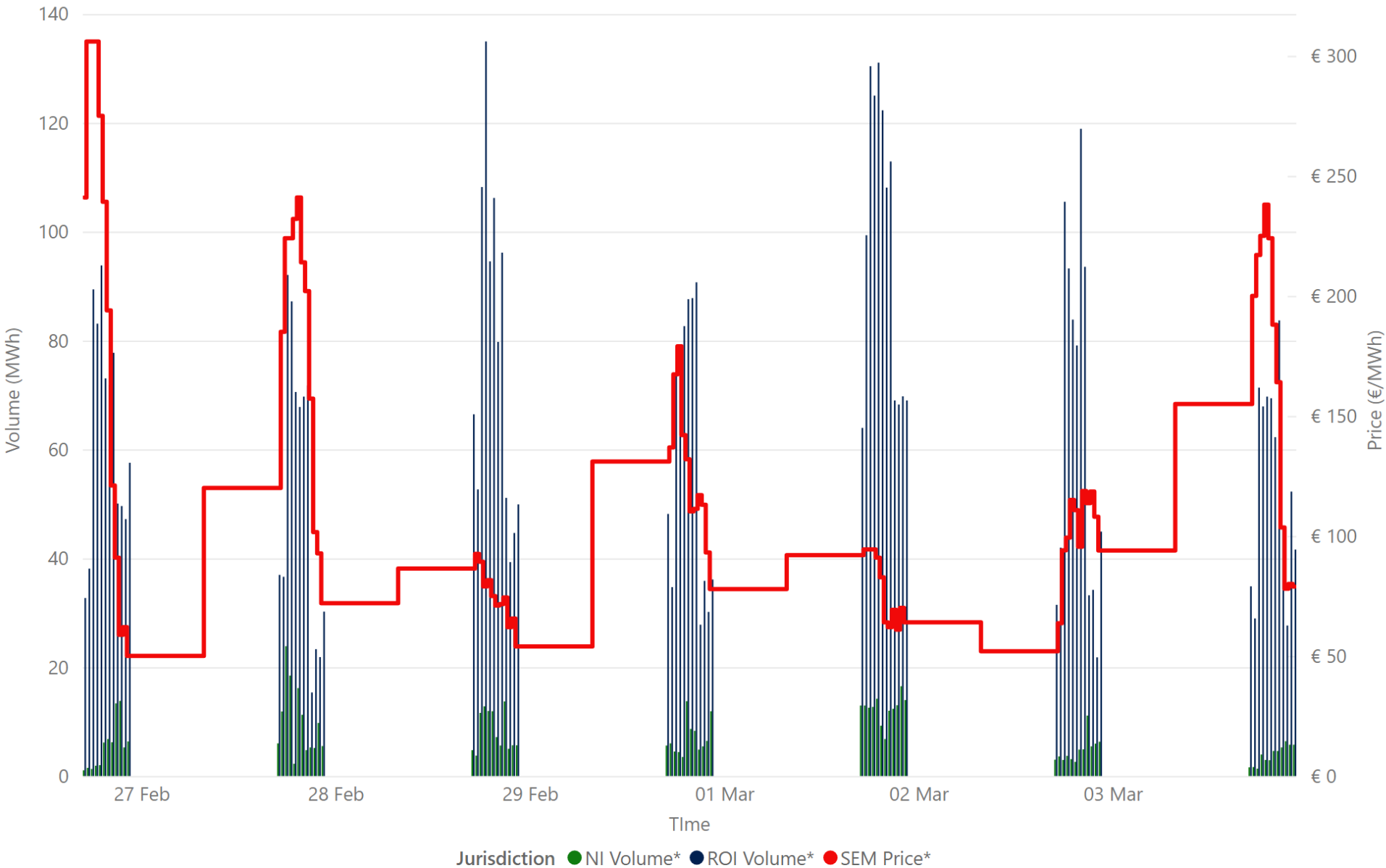
€ 2,062,656.90  
 Weekly SEM IDA2 Market Value\*

22,301.00  
 Weekly SEM IDA2 Volume MWh\*

Sources:  
 \* SEMO PX  
 \*\* EPEX

Jurisdiction Volume ● NI Volume\* ● ROI Volume\* ● SEM IDA2 Price\* ● GB Price\*\*

# Weekly Intraday Auction 3 Summary - Week Commencing 26 February 2024



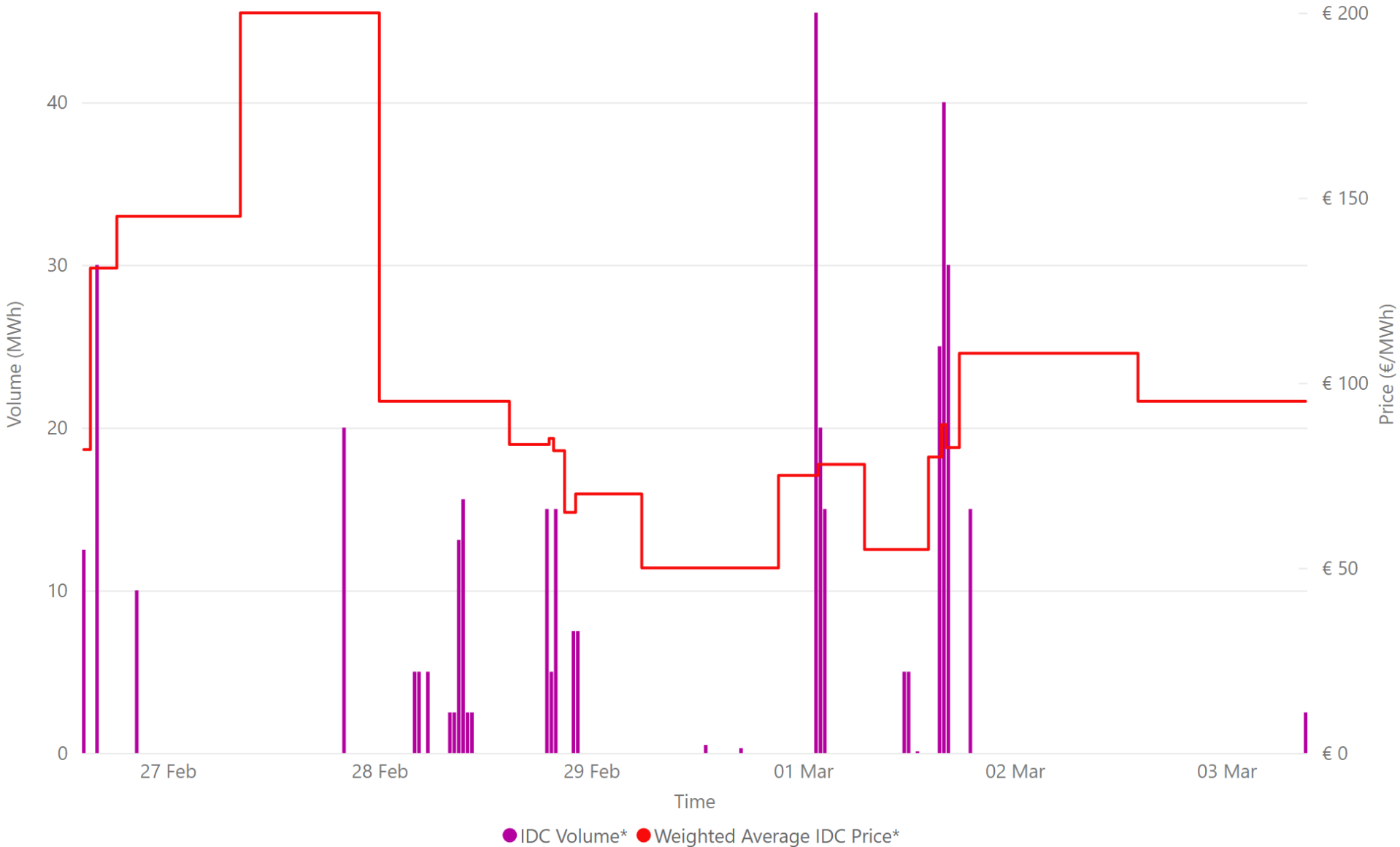
€ 128.60  
Weekly Average SEM IDA3 Price\*

€ 798,327.84  
Weekly SEM IDA3 Market Value\*

6,252.55  
Weekly SEM IDA3 Volume MWh\*

Source: \* SEMO PX

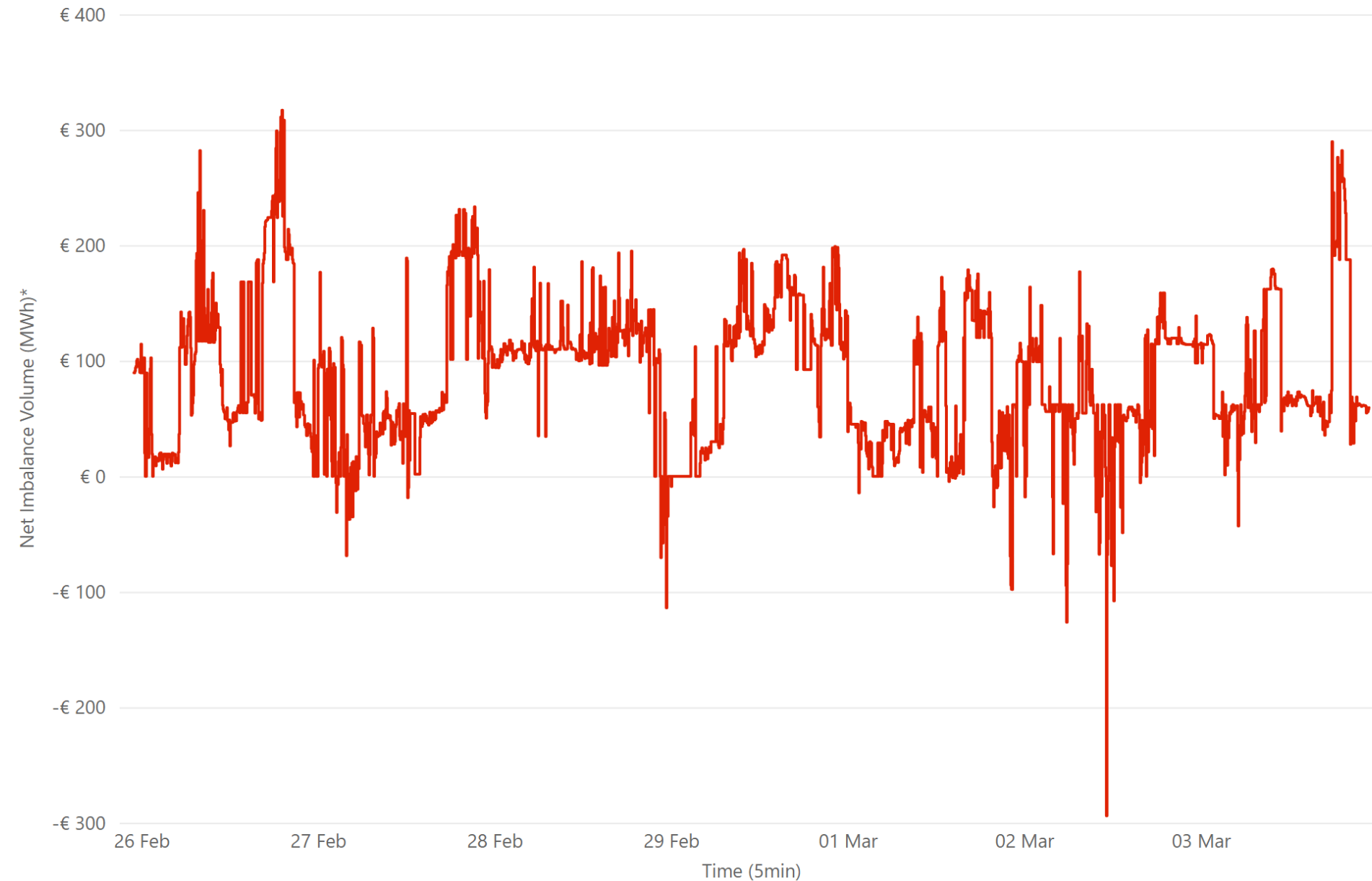
# Weekly Intraday Continuous Summary - Week Commencing 26 February 2024



- € 88.65 Weekly SEM IDC Average Price\*
- € 200.00 Weekly SEM IDC Max Price\*
- € 50.00 Weekly SEM IDC Min Price\*
- 380.10 Weekly SEM IDC Volume MWh\*

Source: \* SEMO PX

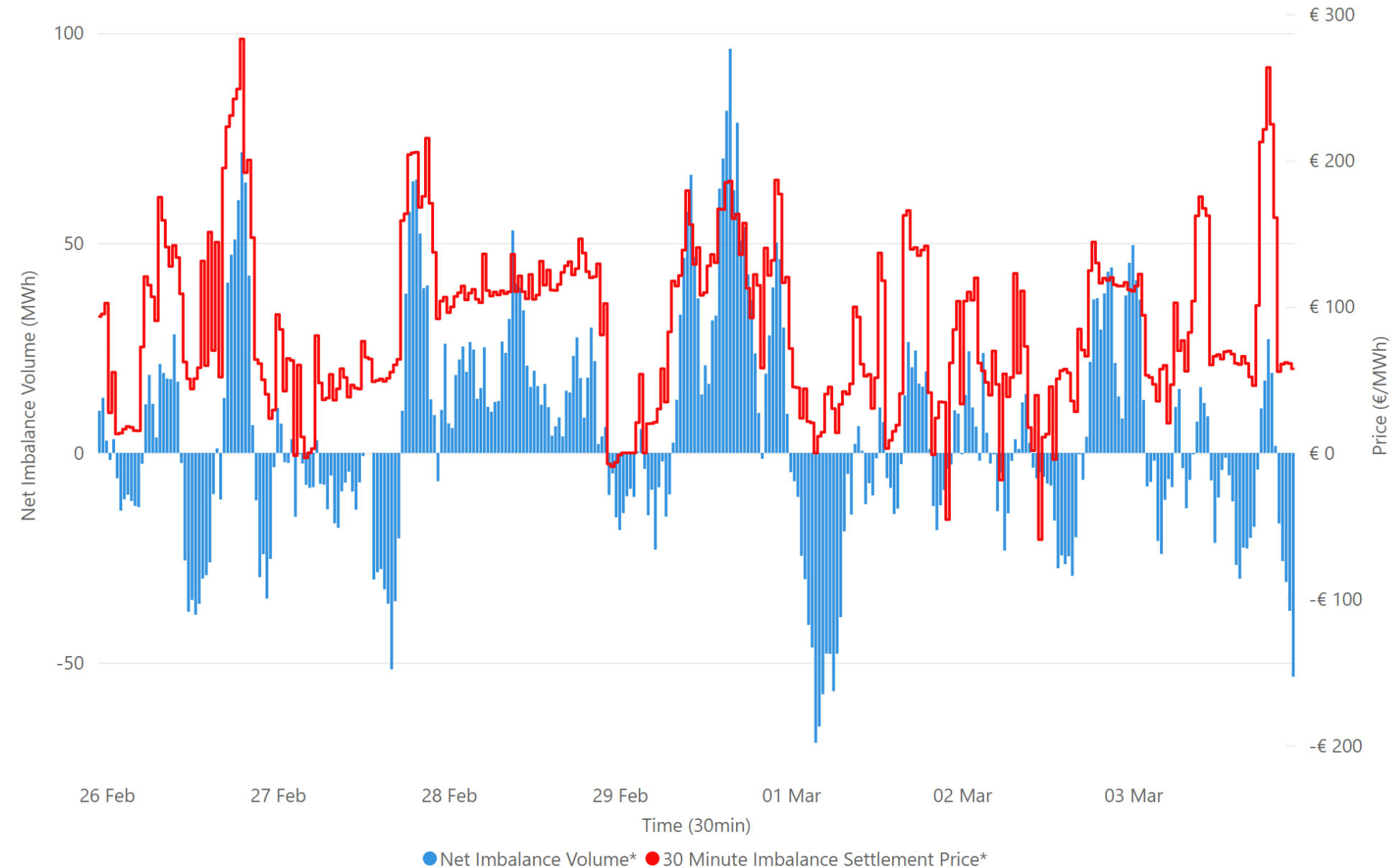
# Weekly Balancing Market 5 Minute Summary - Week Commencing 26 February 2024



€ 86.83  
Ave 5min Imbalance Price\*  
-€ 293.93  
Min 5min Imbalance Price\*  
€ 316.91  
Max 5min Imbalance Price\*

Source: \* SEMO

# Weekly Balancing Market 30 Minute Summary - Week Commencing 26 February 2024

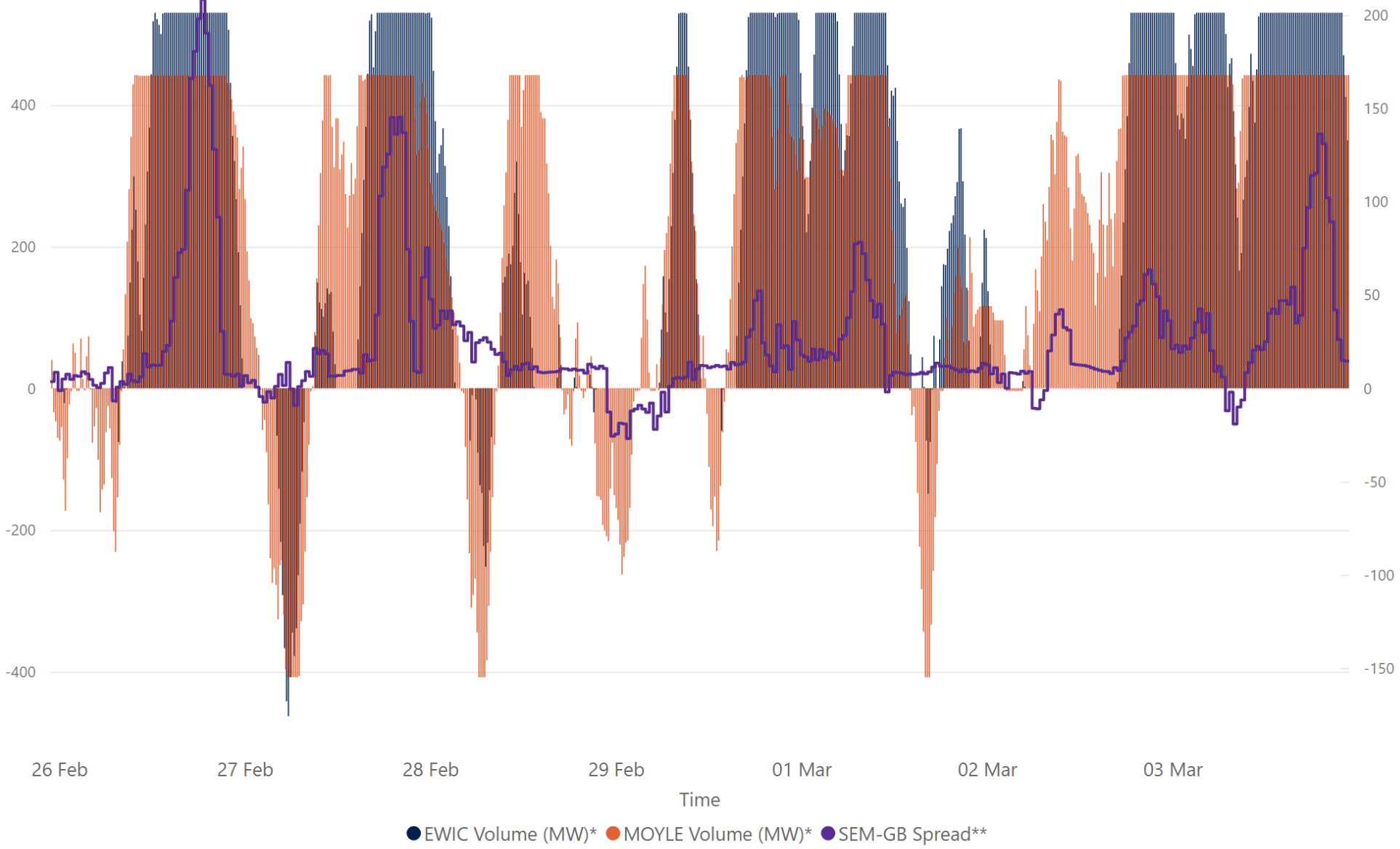


€ 86.71
Ave 30min Imbalance Price*
€ 282.91
Max 30min Imbalance Price*
-€ 59.24
Min 30min Imbalance Price*
96.27
Max Net Imbalance Volume*
-69.08
Min Net Imbalance Volume*

Source: \* SEMO



# Weekly Interconnection Summary - Week Commencing 26 February 2024



173,092.00
Weekly MOYLE (MW) Import*
-22,237.00
Weekly MOYLE (MW) Export*
150,855.00
Weekly MOYLE (MW) NET*
161,014.00
Weekly EWIC (MW) Import*
-5,980.00
Weekly EWIC (MW) Export*
155,034.00
Weekly EWIC (MW) NET*

Sources:  
\* EirGrid  
\*\* SEMO, EPEX & Nordpool

# Weekly Wind Capacity Summary - Week Commencing 26 February 2024



4246  
Max Actual Wind (MW)\*  
174  
Min Actual Wind (MW)\*  
4032  
Max Forecast Wind (MW)\*  
193  
Min Forecast Wind (MW)\*

Sources:  
\* EirGrid

● 15 Minute Forecast Wind (MW)\* ● 15 Minute Actual Wind (MW)\*