

MMU Weekly Report - Euro

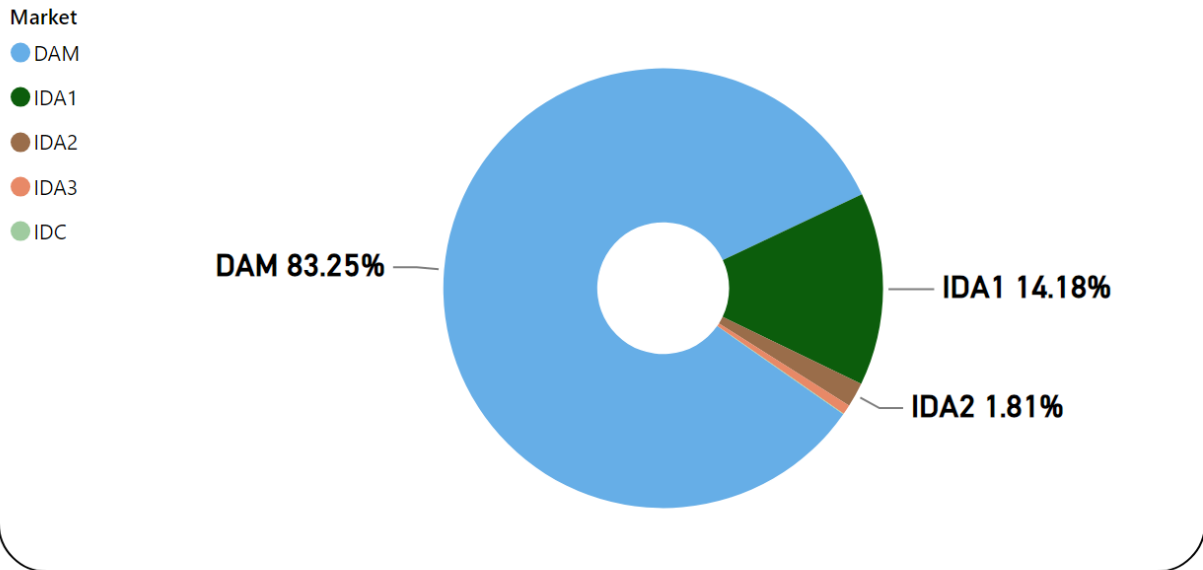




MMU Weekly Market Summary Report

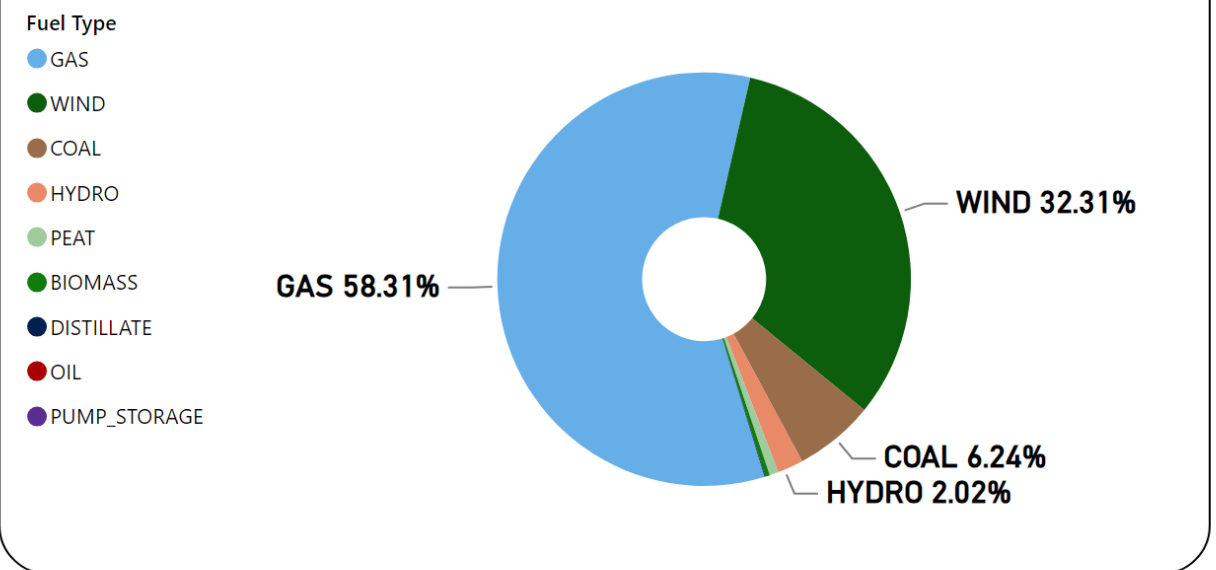
- Week Commencing Monday, January 15, 2024

Weekly Volume by Market



Source: SEMO PX

Weekly Fuel Mix



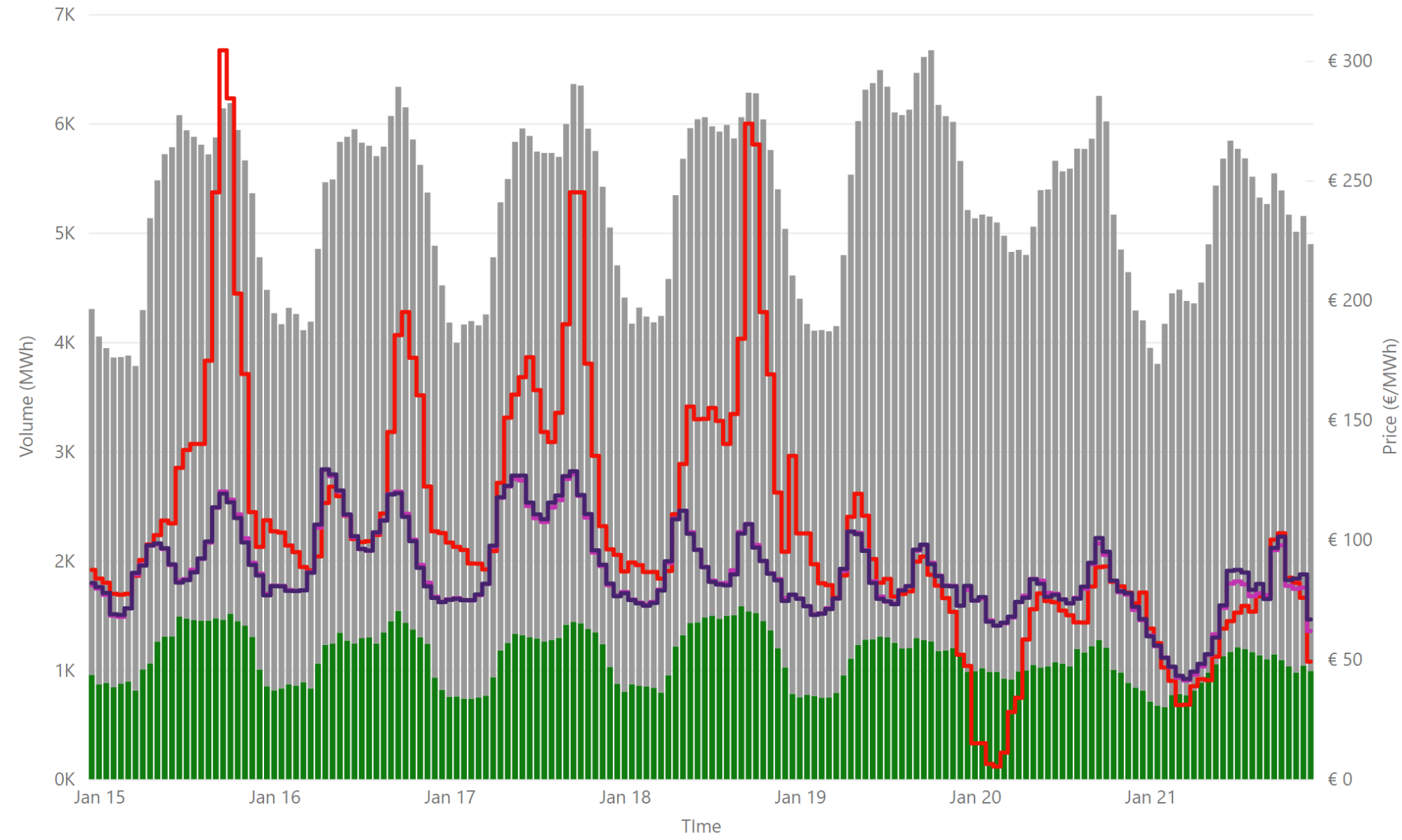
Source: SEMO PX

Summary Table

Date	Daily System Demand (MWh)*	Daily DAM Price (€/MWh)**	Daily Actual Wind (MWh)*	Daily Average Gas Price (p/th)***	Daily Average Coal Price (€/t)***	Daily Average Carbon Price (€/t)***
Monday, January 15, 2024	131,351.75	141.58	17,148.75	75.75	107.50	64.57
Tuesday, January 16, 2024	133,526.50	120.95	24,711.00	74.90	107.75	63.22
Wednesday, January 17, 2024	135,808.50	144.40	11,123.50	69.00	107.10	61.23
Thursday, January 18, 2024	136,684.25	143.72	16,888.00	69.15	107.05	61.09
Friday, January 19, 2024	133,173.50	88.32	67,992.75	68.88	106.00	61.12
Saturday, January 20, 2024	118,894.25	57.53	93,751.25	68.88	106.00	61.12
Sunday, January 21, 2024	113,416.25	64.08	75,147.75	68.88	106.00	61.12

Sources: * EirGrid ** SEMO PX *** Oil Market Journal

Weekly Day Ahead Market Summary - Week Commencing Monday, January 15, 2024

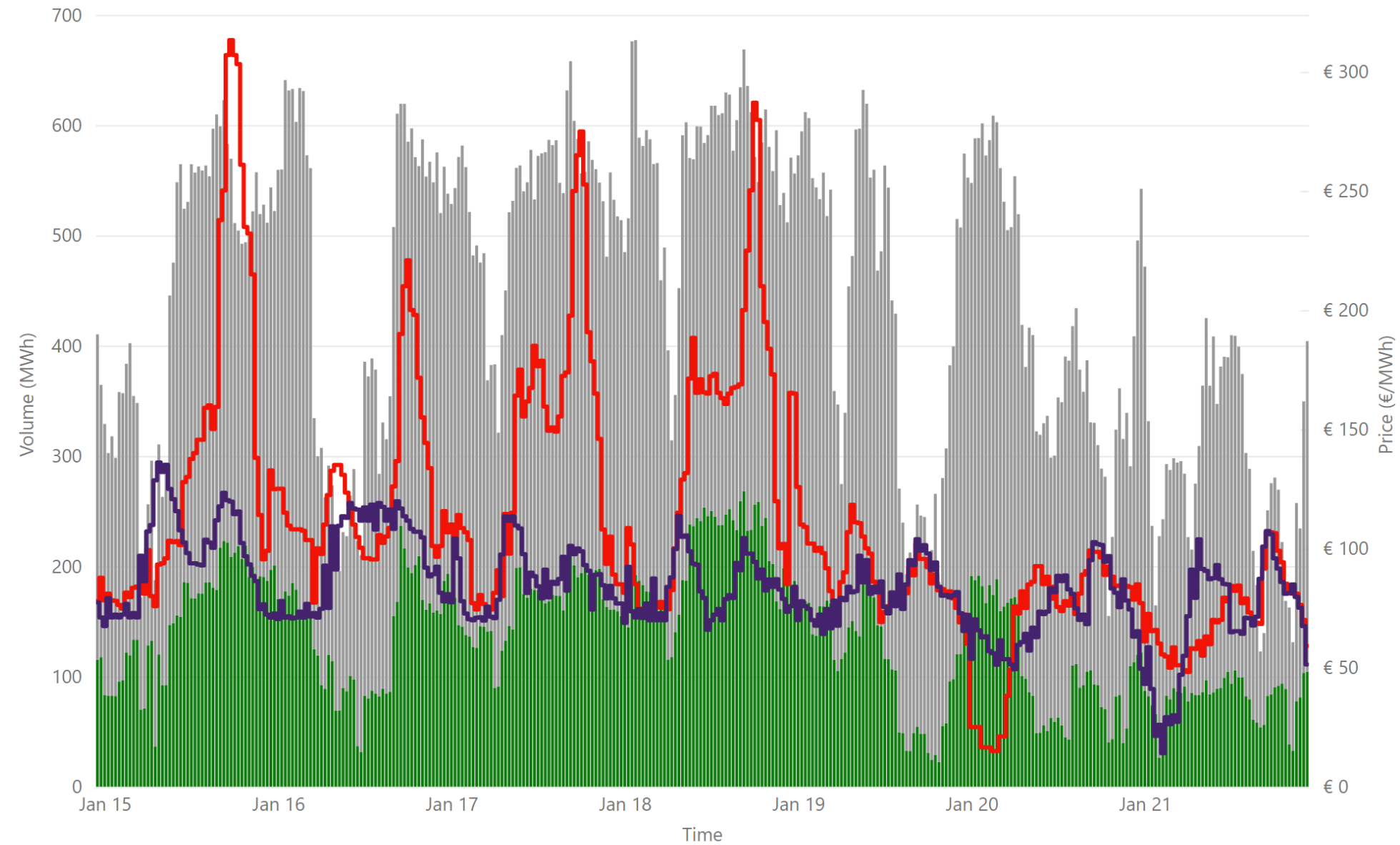


- € 105.23
Weekly Average SEM DAM Price*
- € 86.34
Weekly Average GB EPEX Price**
- € 86.63
Weekly Average GB Nordpool Pri...
- € 96,177,816.71
Weekly SEM DAM Market Value*
- 883,617.50
Weekly SEM DAM Volume MWh*

Sources:
 * SEMO PX
 ** EPEX
 *** Nordpool

Legend ● NI Volume* ● ROI Volume* ● SEM DAM Price* ● GB EPEX DAM Price** ● GB Nordpool DAM Price***

Weekly Intraday Auction 1 Summary - Week Commencing Monday, January 15, 2024



€ 110.85
Weekly Average SEM IDA1 Price*

€ 83.94
Weekly Average GB IDA1 Price**

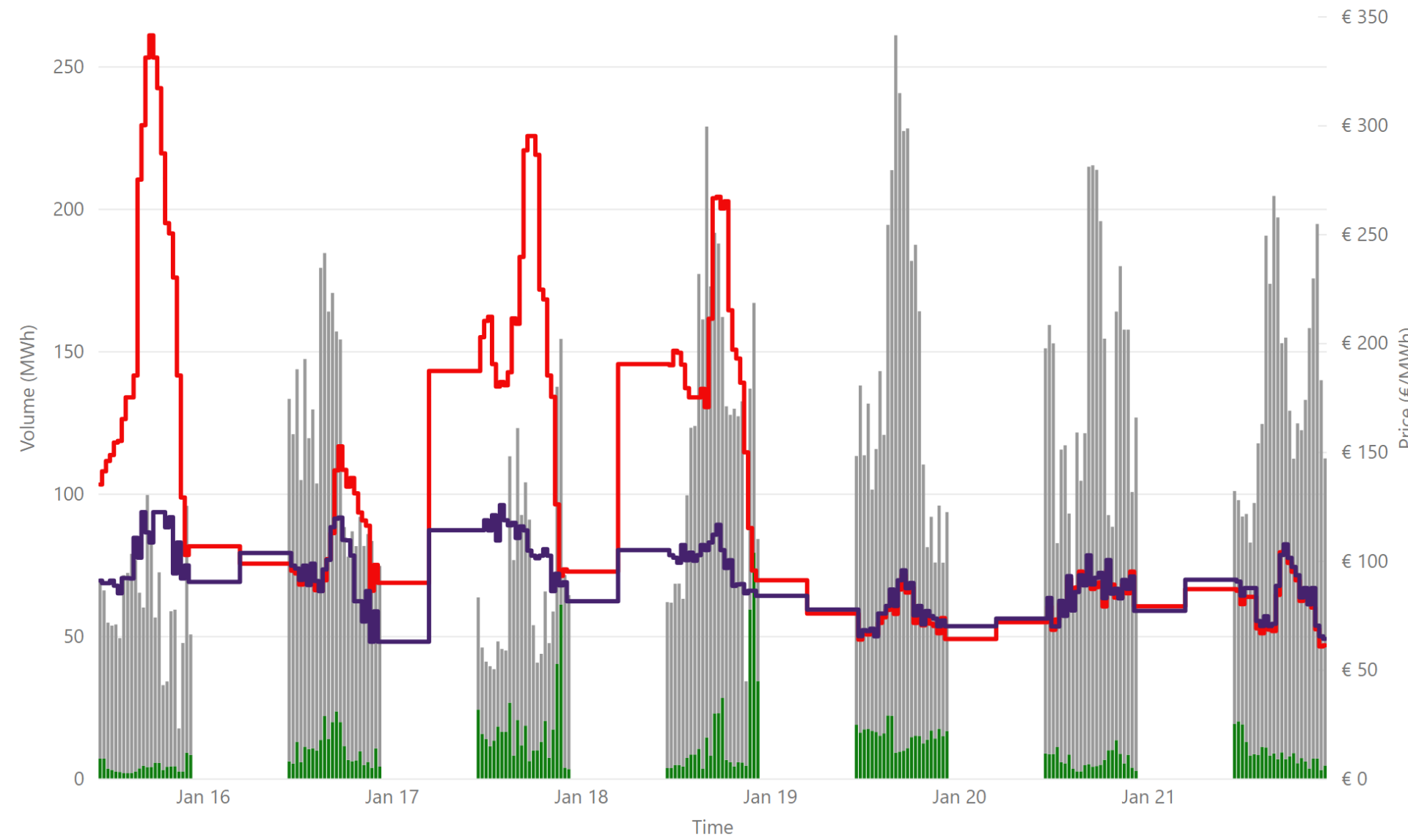
€ 17,774,594.55
Weekly SEM IDA1 Market Value*

150,511.40
Weekly SEM DAM Volume MWh*

Sources:
* SEMO PX
** EPEX

Legend ● NI Volume* ● ROI Volume* ● SEM IDA1 Price* ● GB IDA1 Price**

Weekly Intraday Auction 2 Summary - Week Commencing Monday, January 15, 2024



€ 134.92
Weekly Average SEM IDA2 Price*

€ 92.52
Weekly Average GB IDA2 Price**

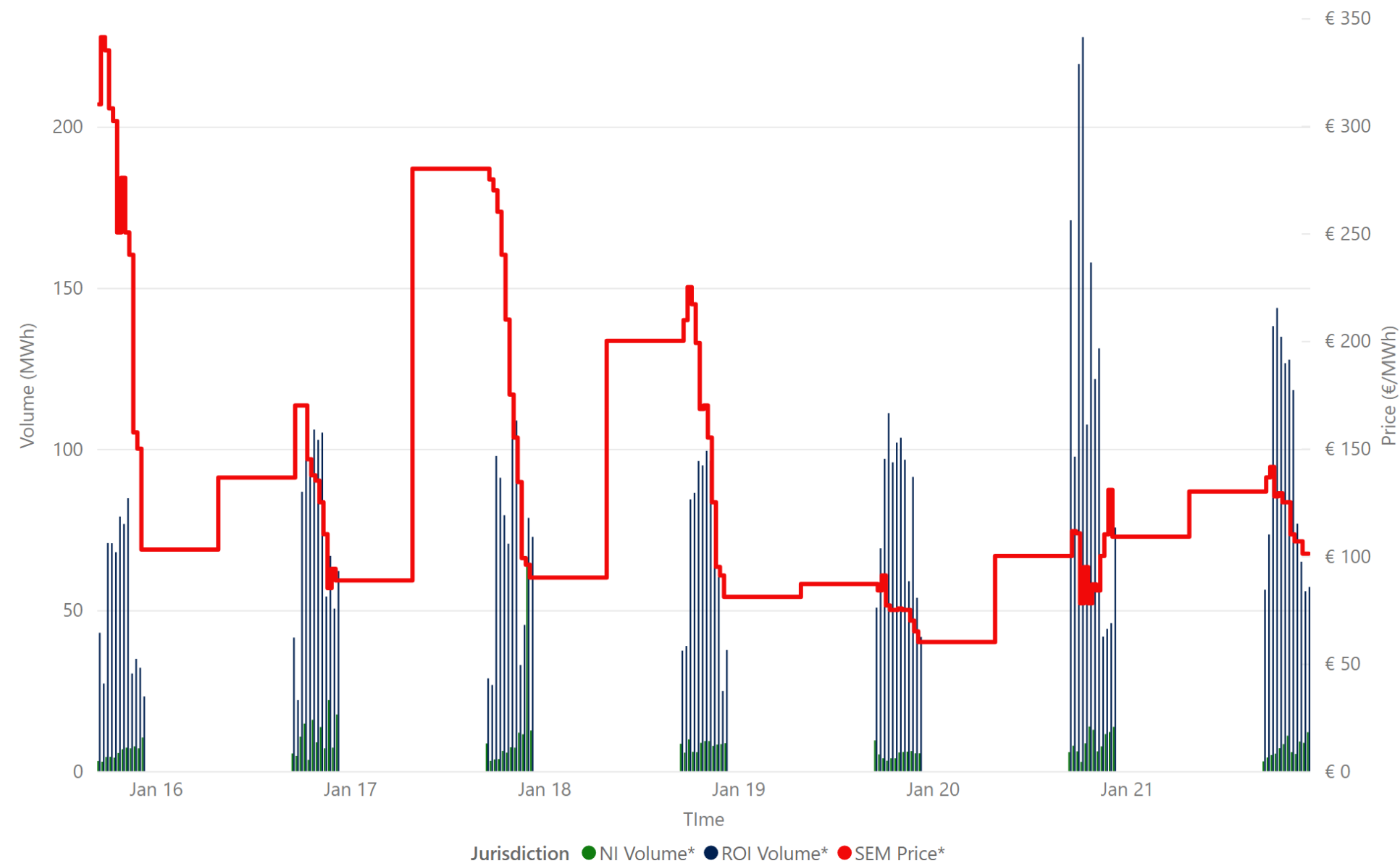
€ 2,341,183.55
Weekly SEM IDA2 Market Value*

19,162.70
Weekly SEM IDA2 Volume MWh*

Sources:
* SEMO PX
** EPEX

Jurisdiction Volume ● NI Volume* ● ROI Volume* ● SEM IDA2 Price* ● GB Price**

Weekly Intraday Auction 3 Summary - Week Commencing Monday, January 15, 20...



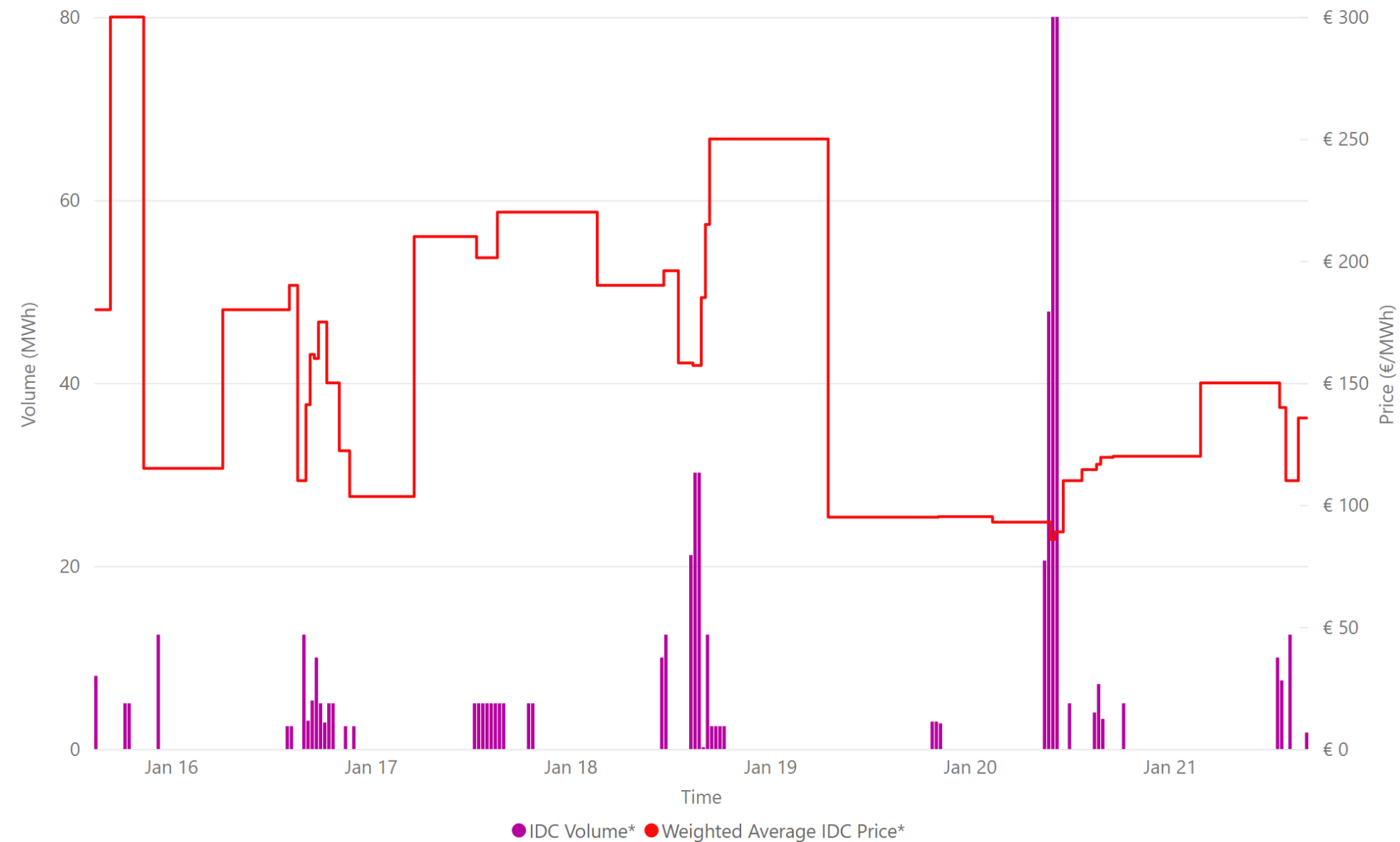
€ 147.08
Weekly Average SEM IDA3 Price*

€ 1,038,995.30
Weekly SEM IDA3 Market Value*

7,503.80
Weekly SEM IDA3 Volume MWh*

Source: * SEMO PX

Weekly Intraday Continuous Summary - Week Commencing Monday, January 15, 2024



€ 166.63
Weekly SEM IDC Average Price*

€ 300.00
Weekly SEM IDC Max Price*

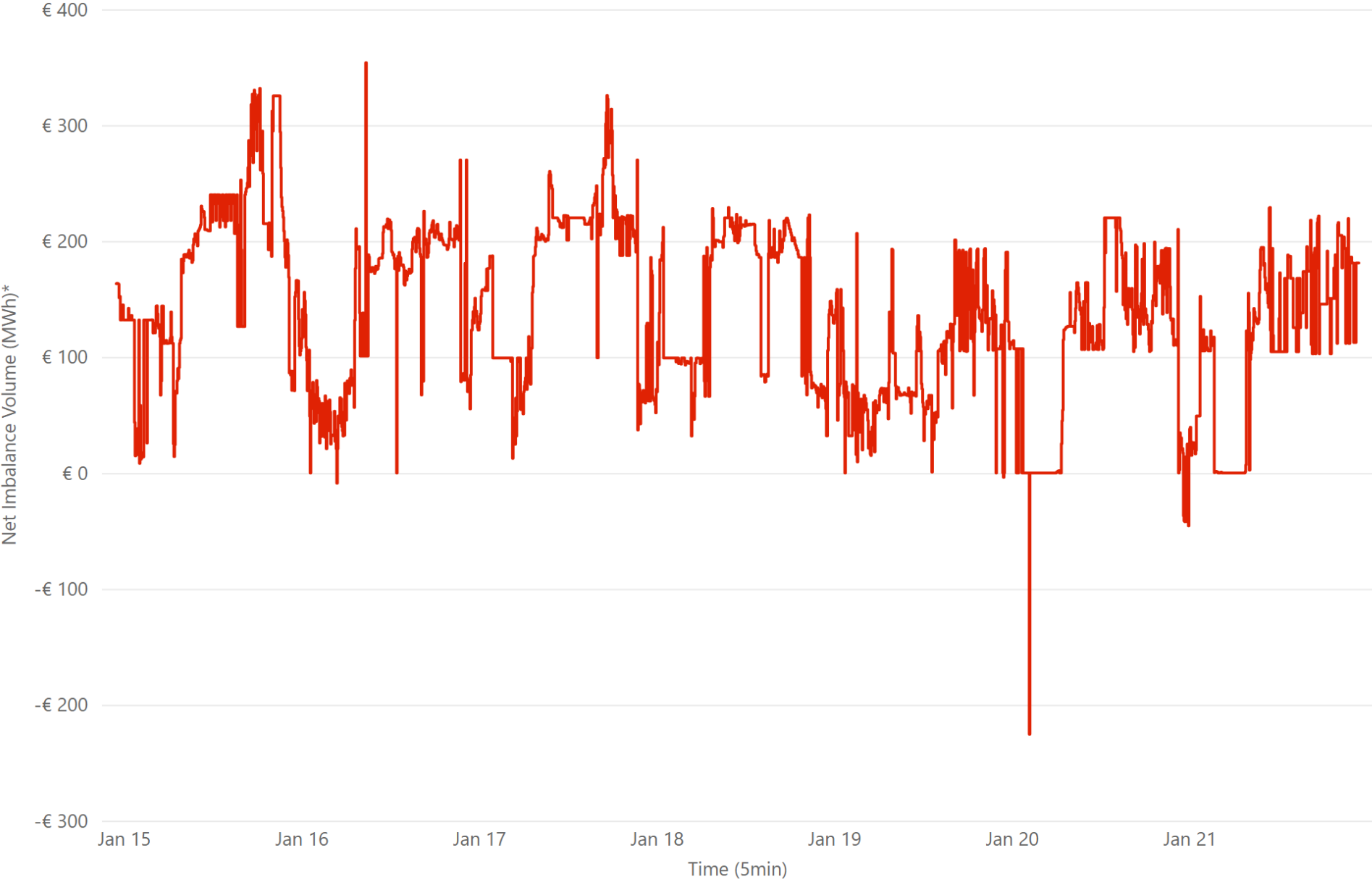
€ 86.00
Weekly SEM IDC Min Price*

559.50
Weekly SEM IDC Volume MWh*

Source: * SEMO PX



Weekly Balancing Market 5 Minute Summary - Week Commencing Monday, January 15, 2024

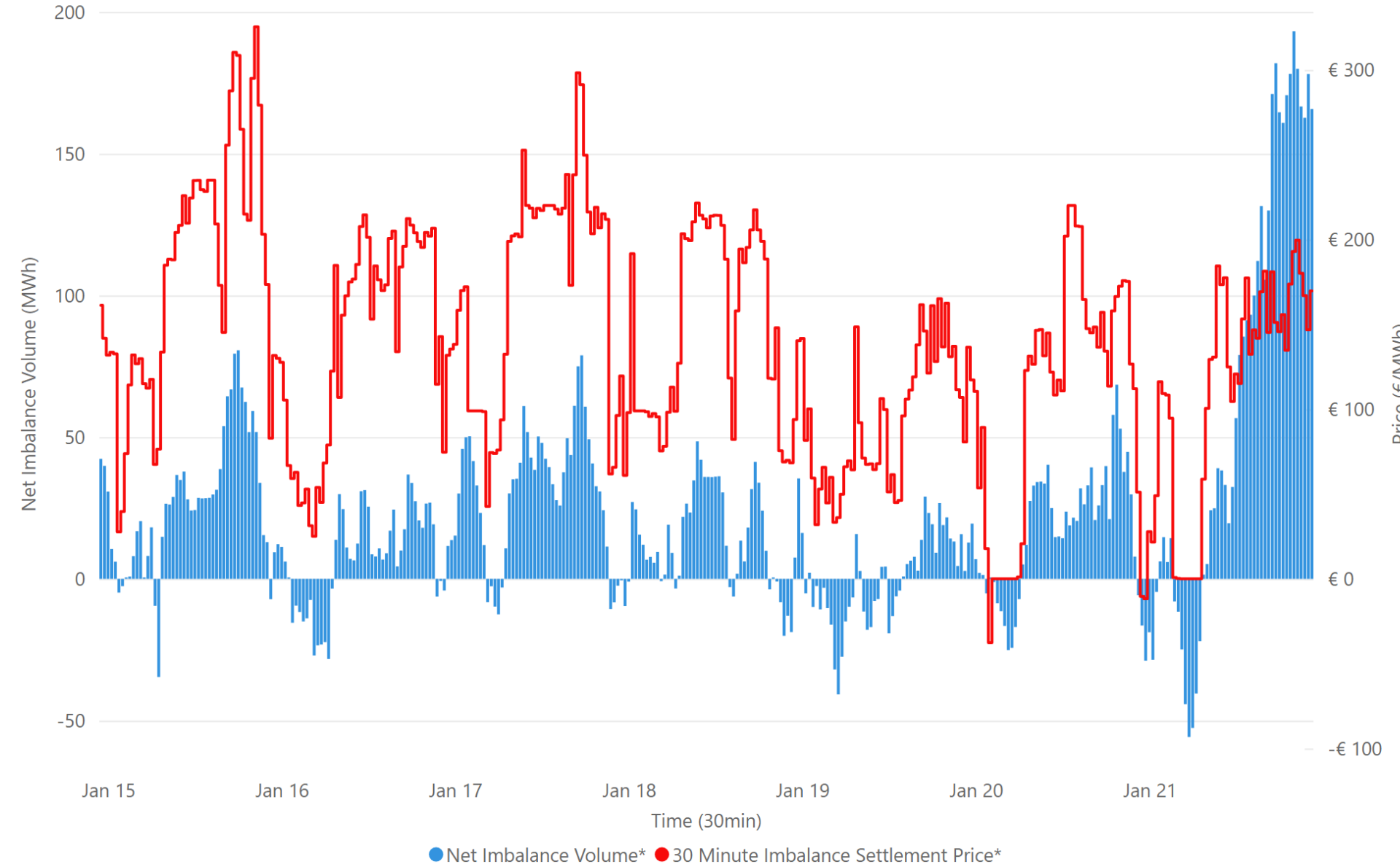


€ 136.43
Ave 5min Imbalance Price*
-€ 225.38
Min 5min Imbalance Price*
€ 354.00
Max 5min Imbalance Price*

Source: * SEMO



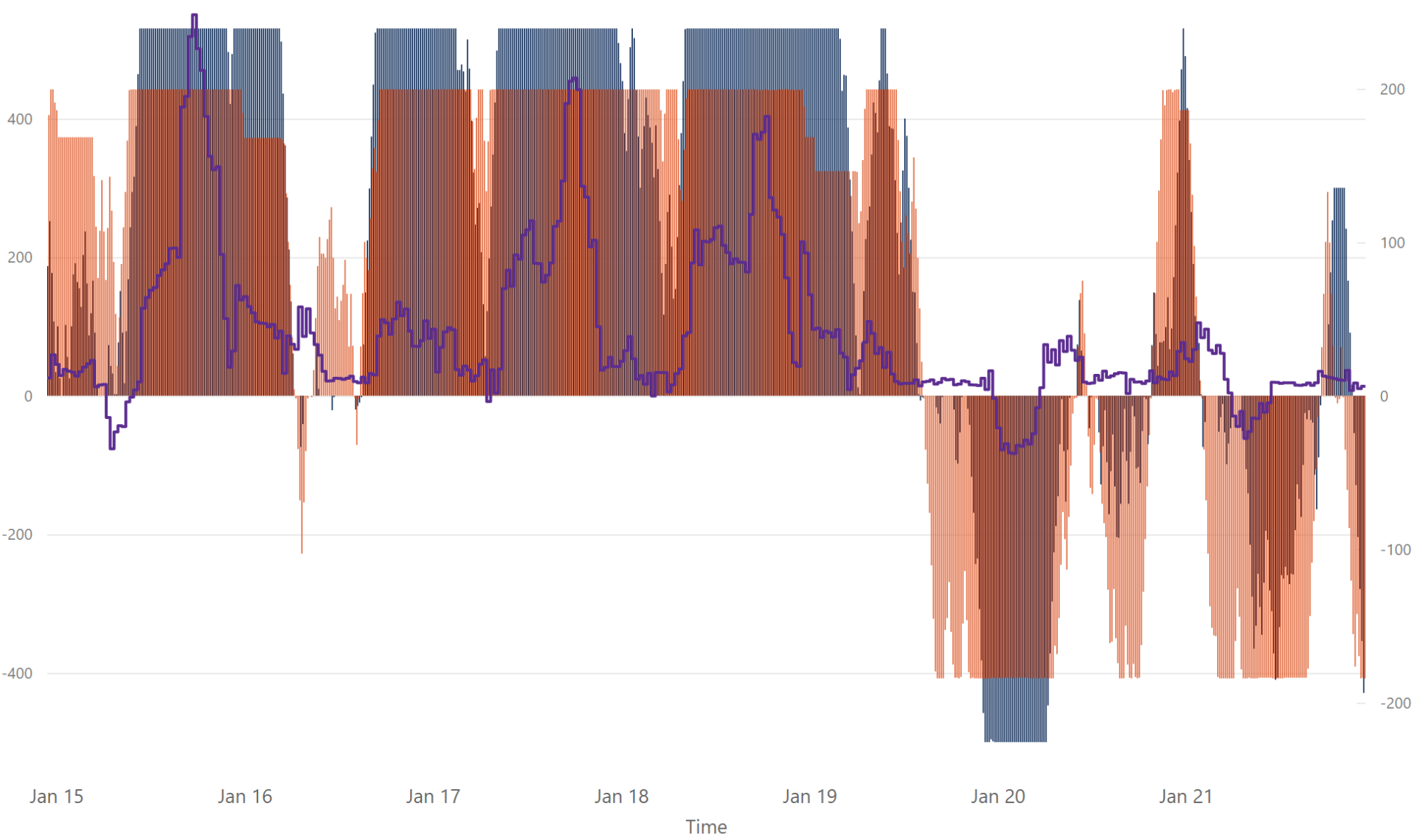
Weekly Balancing Market 30 Minute Summary - Week Commencing Monday, January 15, 2024



- € 136.43
Ave 30min Imbalance Price*
- € 325.36
Max 30min Imbalance Price*
- € 37.56
Min 30min Imbalance Price*
- 193.16
Max Net Imbalance Volume*
- 55.79
Min Net Imbalance Volume*

Source: * SEMO

Weekly Interconnection Summary - Week Commencing Monday, January 15, 2024



178,450.00
 Weekly MOYLE (MW) Import*
-61,427.00
 Weekly MOYLE (MW) Export*
117,023.00
 Weekly MOYLE (MW) NET*
183,009.00
 Weekly EWIC (MW) Import*
-33,230.00
 Weekly EWIC (MW) Export*
149,779.00
 Weekly EWIC (MW) NET*

Sources:
 * EirGrid
 ** SEMO, EPEX & Nordpool

● EWIC Volume (MW)* ● MOYLE Volume (MW)* ● SEM-GB Spread**

Weekly Wind Capacity Summary - Week Commencing Monday, January 15, 2024



4573
Max Actual Wind (MW)*
157
Min Actual Wind (MW)*
5252
Max Forecast Wind (MW)*
75
Min Forecast Wind (MW)*

Sources:
* EirGrid

● 15 Minute Forecast Wind (MW)* ● 15 Minute Actual Wind (MW)*