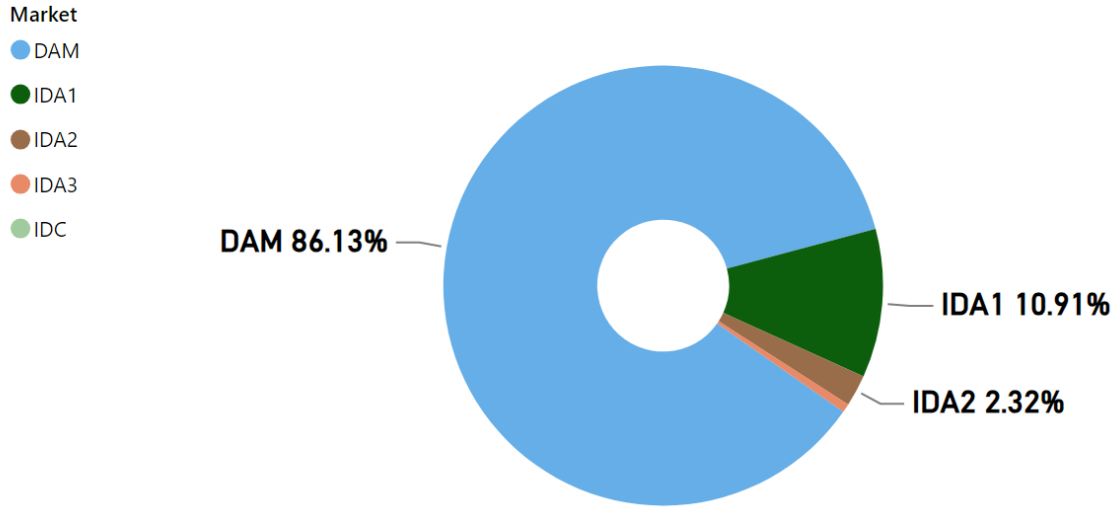


MMU Weekly Market Summary Report

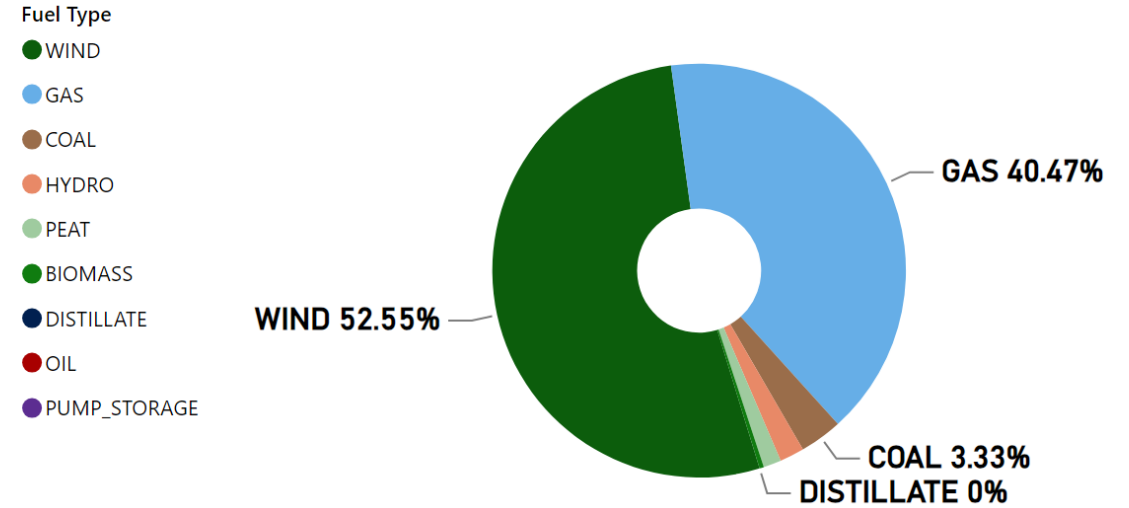
- Week Commencing 04 December 2023

Weekly Volume by Market



Source: SEMO PX

Weekly Fuel Mix



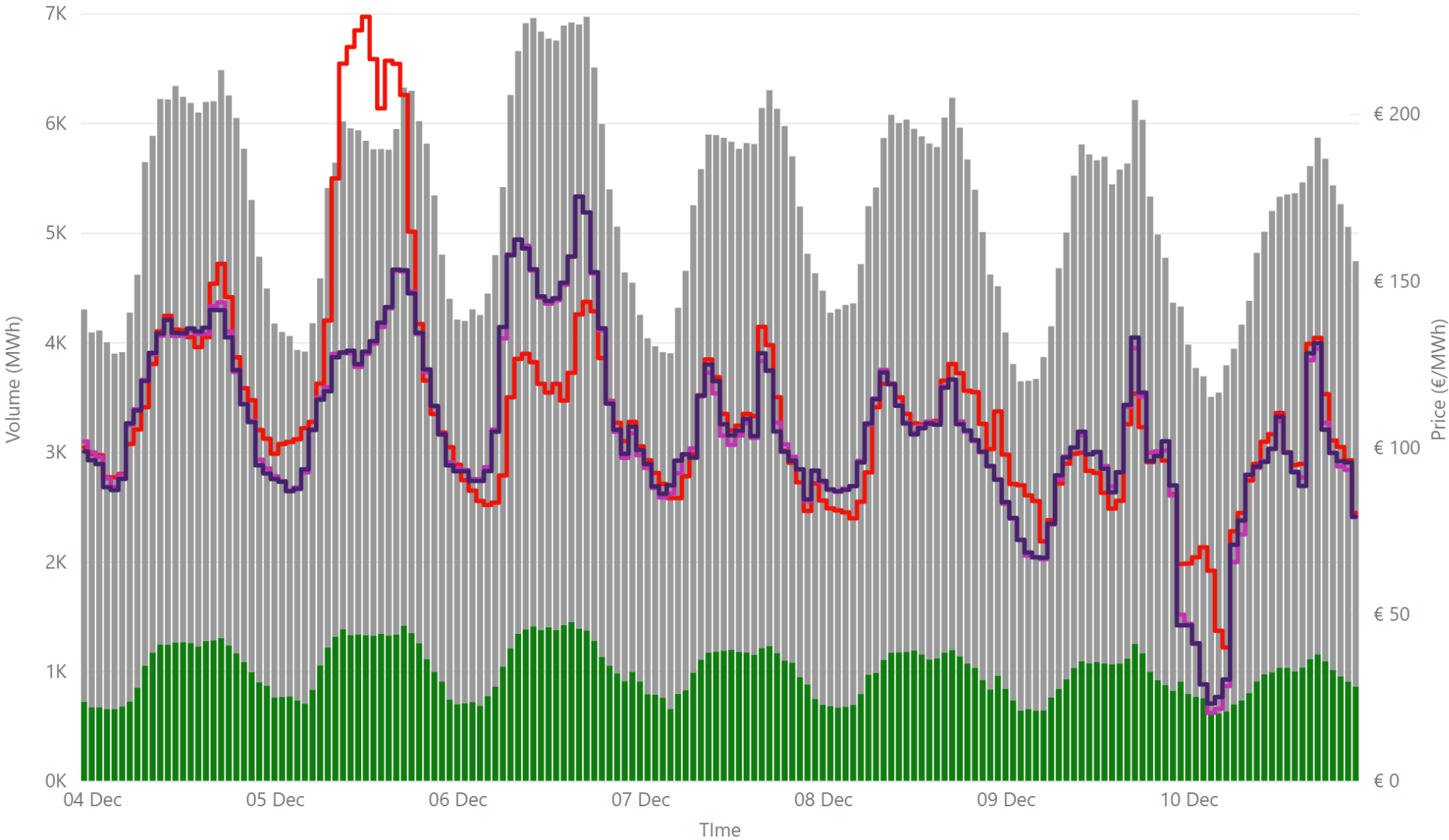
Source: SEMO PX

Summary Table

Date	Daily System Demand (MWh)*	Daily DAM Price (€/MWh)**	Daily Actual Wind (MWh)*	Daily Average Gas Price (p/th)***	Daily Average Coal Price (€/t)***	Daily Average Carbon Price (€/t)***
04 December 2023	129,328.00	122.67	56,199.25	96.50	118.90	70.46
05 December 2023	131,045.75	162.07	23,392.00	92.73	117.95	68.84
06 December 2023	130,664.50	114.42	91,635.00	94.25	120.75	68.82
07 December 2023	125,293.50	105.59	76,313.75	96.00	121.75	69.65
08 December 2023	123,294.00	105.17	87,540.75	94.10	122.90	68.58
09 December 2023	114,112.50	93.70	81,247.25	94.10	122.90	68.58
10 December 2023	111,512.25	91.60	66,645.50	94.10	122.90	68.58

Sources: * EirGrid ** SEMO PX *** Oil Market Journal

Weekly Day Ahead Market Summary - Week Commencing 04 December 2023

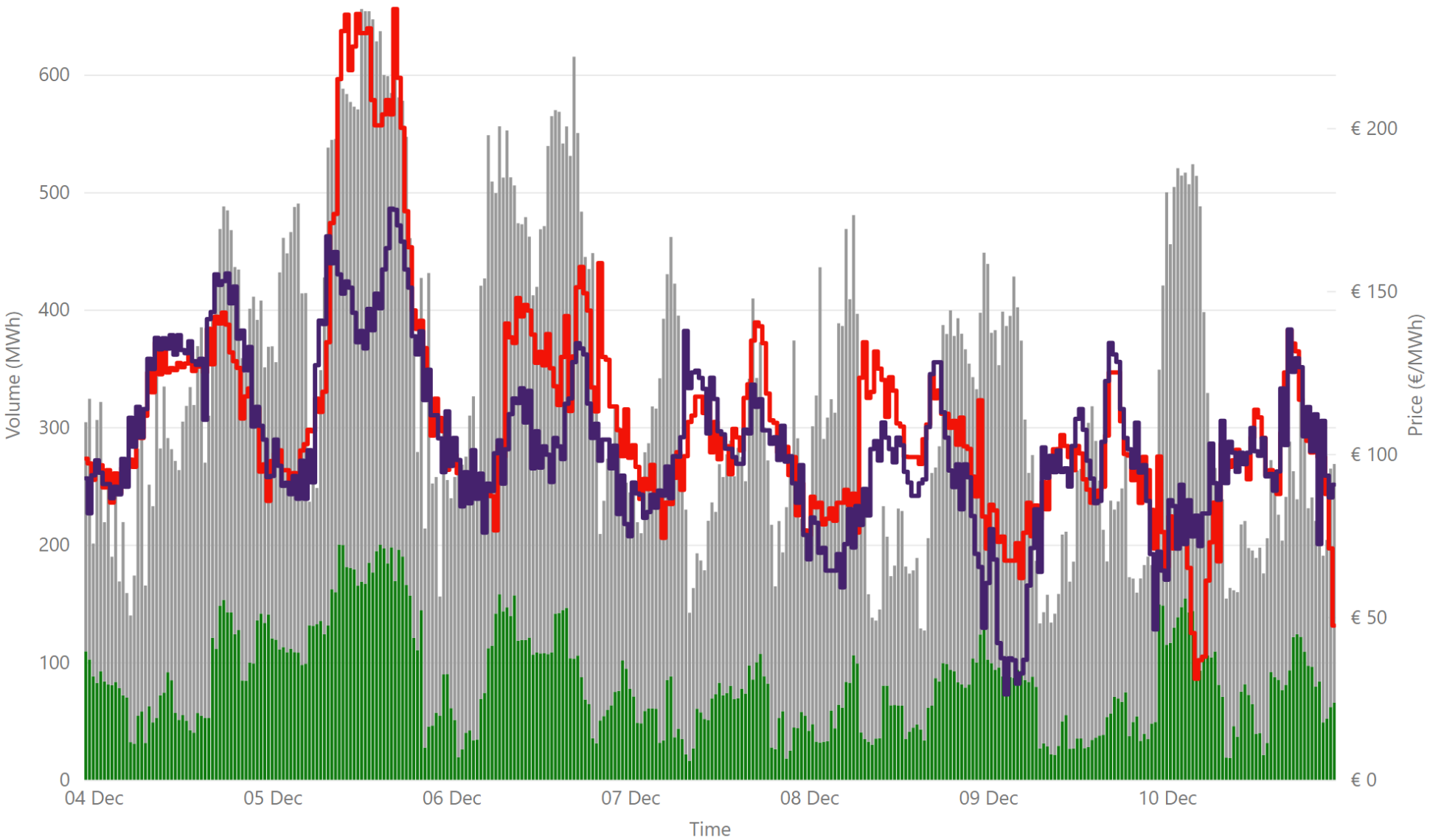


- € 110.70
Weekly Average SEM DAM Price*
- € 106.01
Weekly Average GB EPEX Price**
- € 106.22
Weekly Average GB Nordpool Pri...
- € 100,188,088.97
Weekly SEM DAM Market Value*
- 877,787.10
Weekly SEM DAM Volume MWh*

Sources:
 * SEMO PX
 ** EPEX
 *** Nordpool

Legend ● NI Volume* ● ROI Volume* ● SEM DAM Price* ● GB EPEX DAM Price** ● GB Nordpool DAM Price***

Weekly Intraday Auction 1 Summary - Week Commencing 04 December 2023

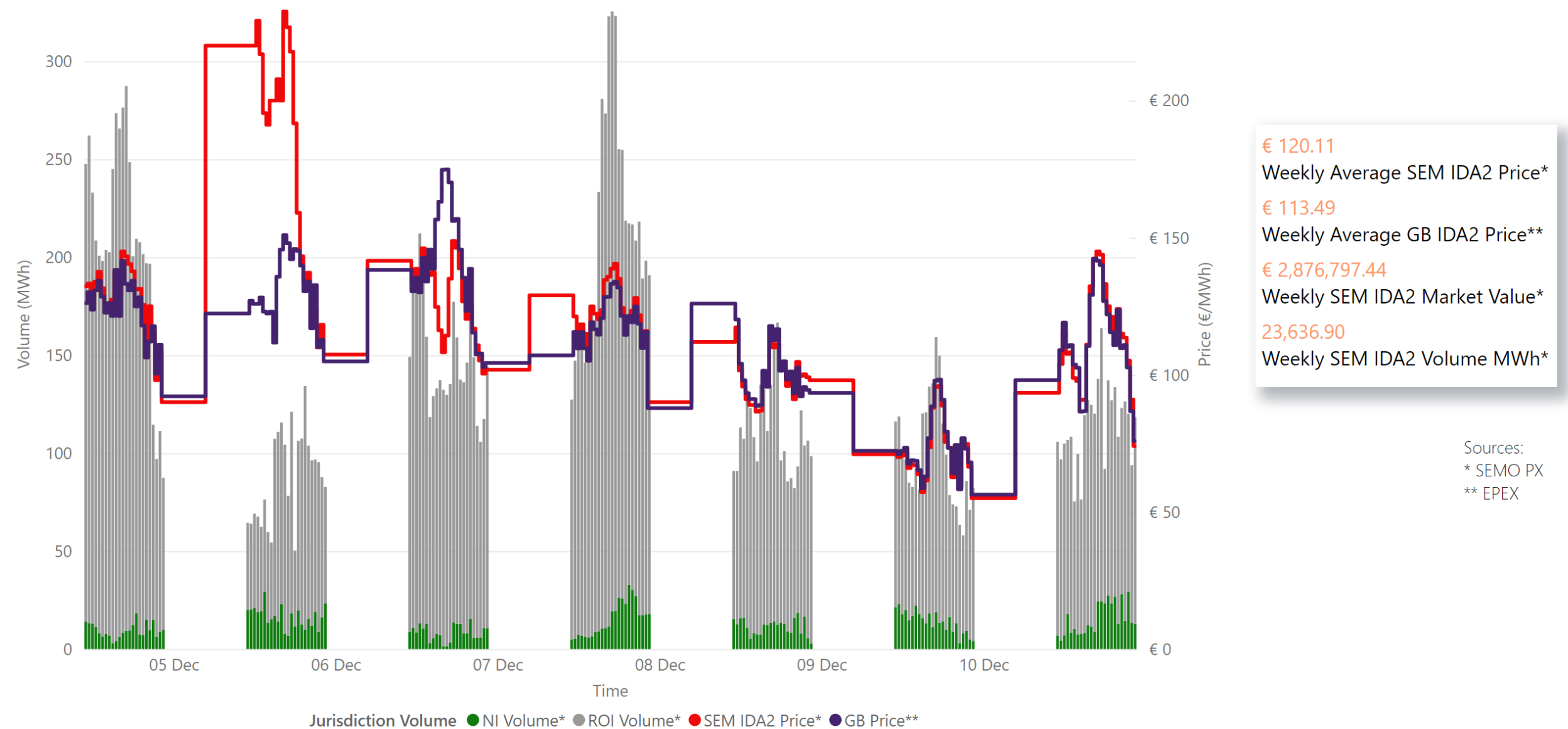


€ 110.77
 Weekly Average SEM IDA1 Price*
€ 103.29
 Weekly Average GB IDA1 Price**
€ 12,993,717.50
 Weekly SEM IDA1 Market Value*
111,238.50
 Weekly SEM DAM Volume MWh*

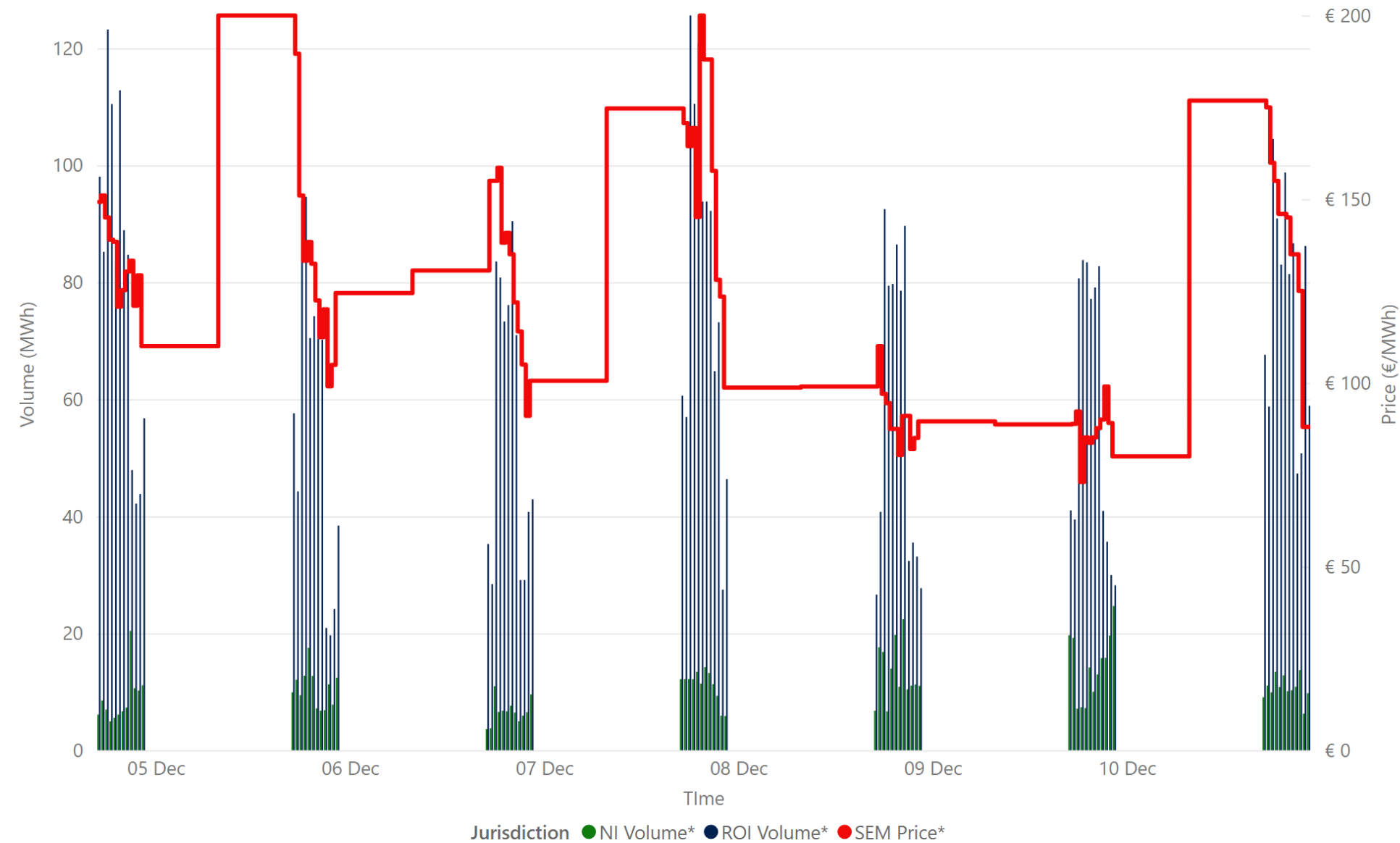
Sources:
 * SEMO PX
 ** EPEX

Legend ● NI Volume* ● ROI Volume* ● SEM IDA1 Price* ● GB IDA1 Price**

Weekly Intraday Auction 2 Summary - Week Commencing 04 December 2023



Weekly Intraday Auction 3 Summary - Week Commencing 04 December 2023



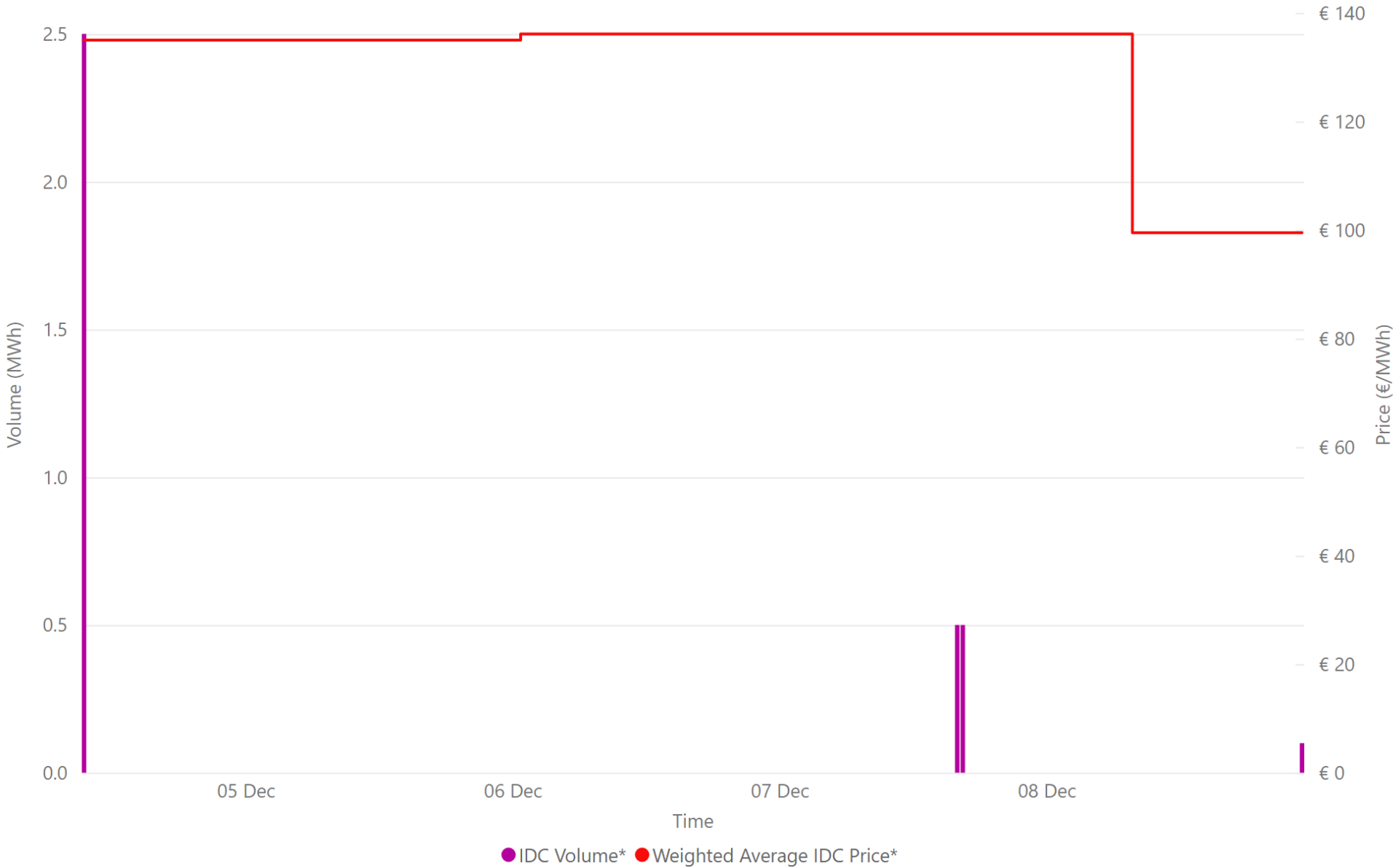
€ 124.83
Weekly Average SEM IDA3 Price*

€ 838,987.21
Weekly SEM IDA3 Market Value*

6,524.55
Weekly SEM IDA3 Volume MWh*

Source: * SEMO PX

Weekly Intraday Continuous Summary - Week Commencing 04 December 2023



€ 126.69
Weekly SEM IDC Average Price*

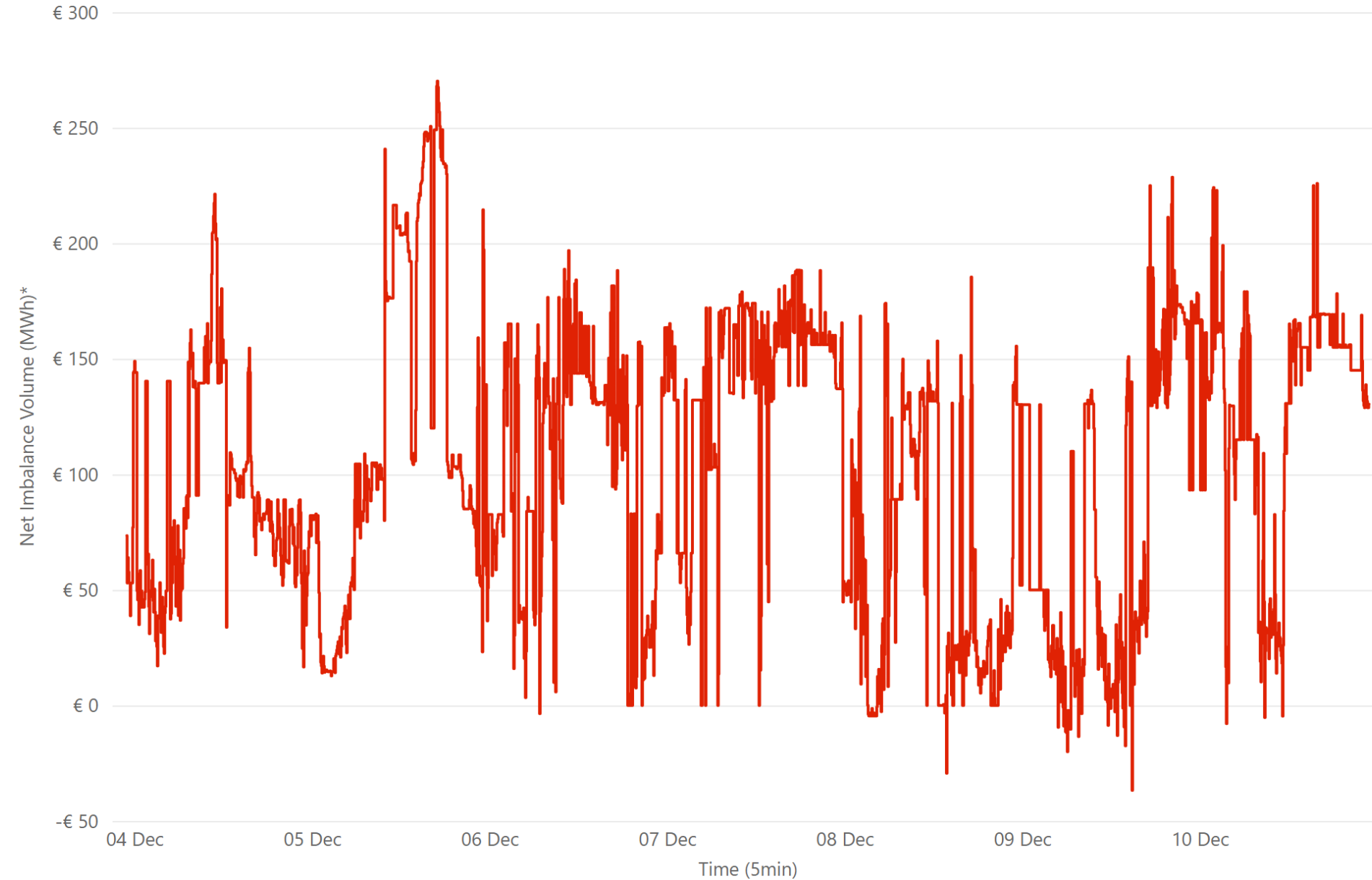
€ 136.13
Weekly SEM IDC Max Price*

€ 99.50
Weekly SEM IDC Min Price*

3.60
Weekly SEM IDC Volume MWh*

Source: * SEMO PX

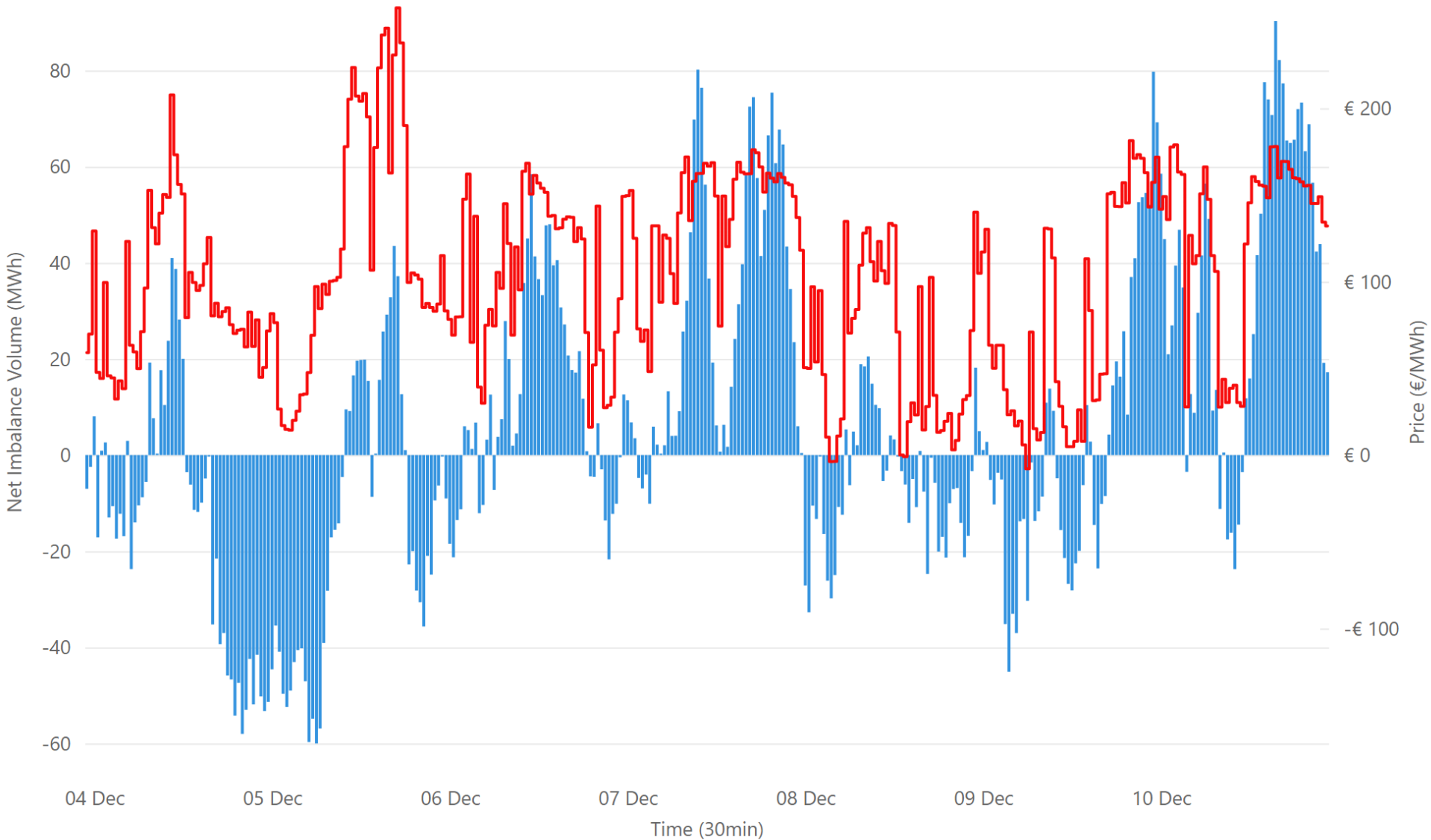
Weekly Balancing Market 5 Minute Summary - Week Commencing 04 December 2023



€ 102.80
Ave 5min Imbalance Price*
-€ 36.75
Min 5min Imbalance Price*
€ 270.19
Max 5min Imbalance Price*

Source: * SEMO

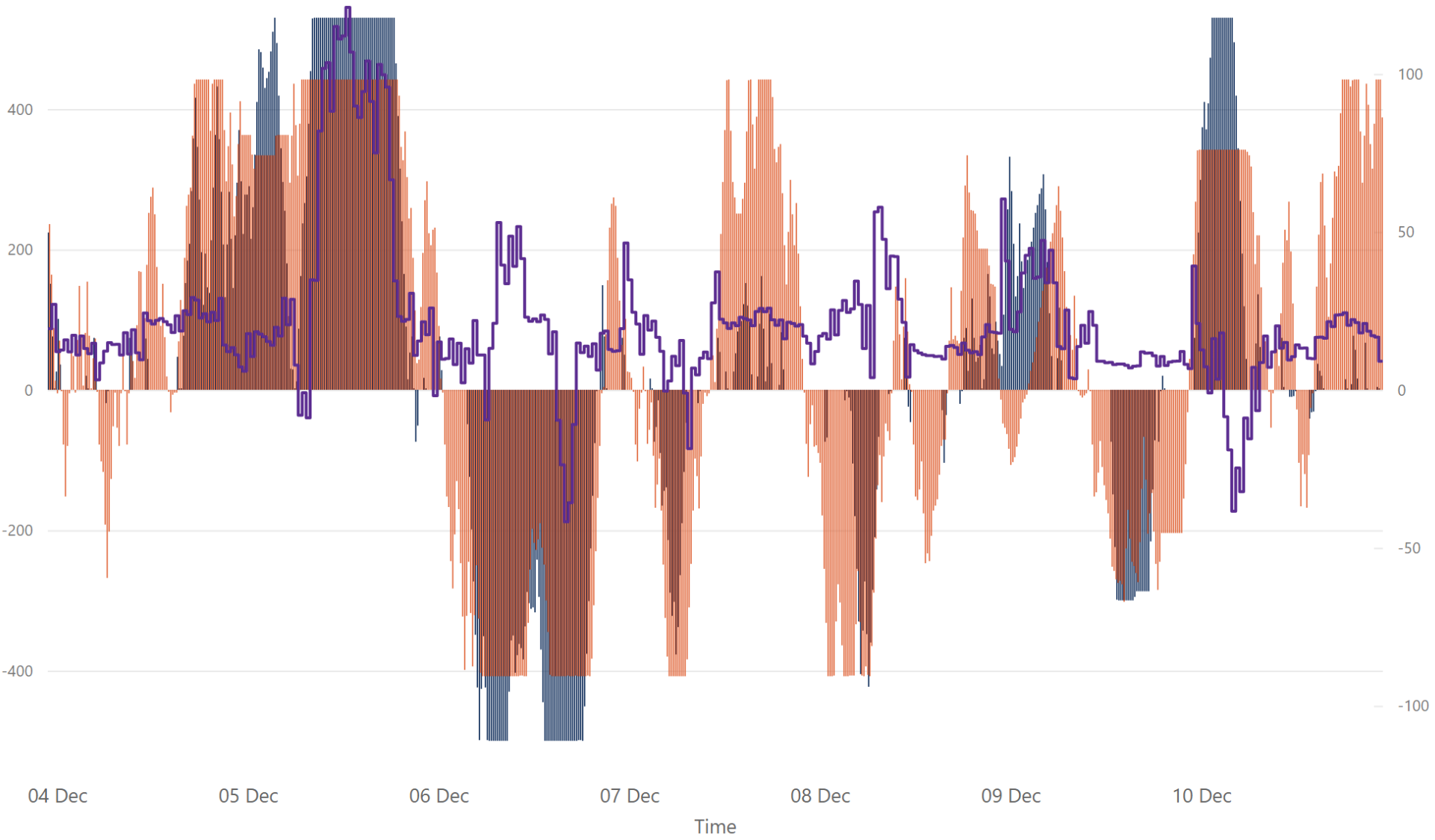
Weekly Balancing Market 30 Minute Summary - Week Commencing 04 December 2023



€ 103.33
Ave 30min Imbalance Price*
€ 257.87
Max 30min Imbalance Price*
-€ 7.91
Min 30min Imbalance Price*
90.31
Max Net Imbalance Volume*
-59.99
Min Net Imbalance Volume*

Source: * SEMO

Weekly Interconnection Summary - Week Commencing 04 December 2023



101,629.00
Weekly MOYLE (MW) Import*
-60,886.00
Weekly MOYLE (MW) Export*
40,743.00
Weekly MOYLE (MW) NET*
63,437.00
Weekly EWIC (MW) Import*
-40,036.00
Weekly EWIC (MW) Export*
23,401.00
Weekly EWIC (MW) NET*

Sources:
* EirGrid
** SEMO, EPEX & Nordpool

● EWIC Volume (MW)* ● MOYLE Volume (MW)* ● SEM-GB Spread**

Weekly Wind Capacity Summary - Week Commencing 04 December 2023



4629
Max Actual Wind (MW)*
107
Min Actual Wind (MW)*
5209
Max Forecast Wind (MW)*
121
Min Forecast Wind (MW)*

Sources:
* EirGrid

● 15 Minute Forecast Wind (MW)* ● 15 Minute Actual Wind (MW)*